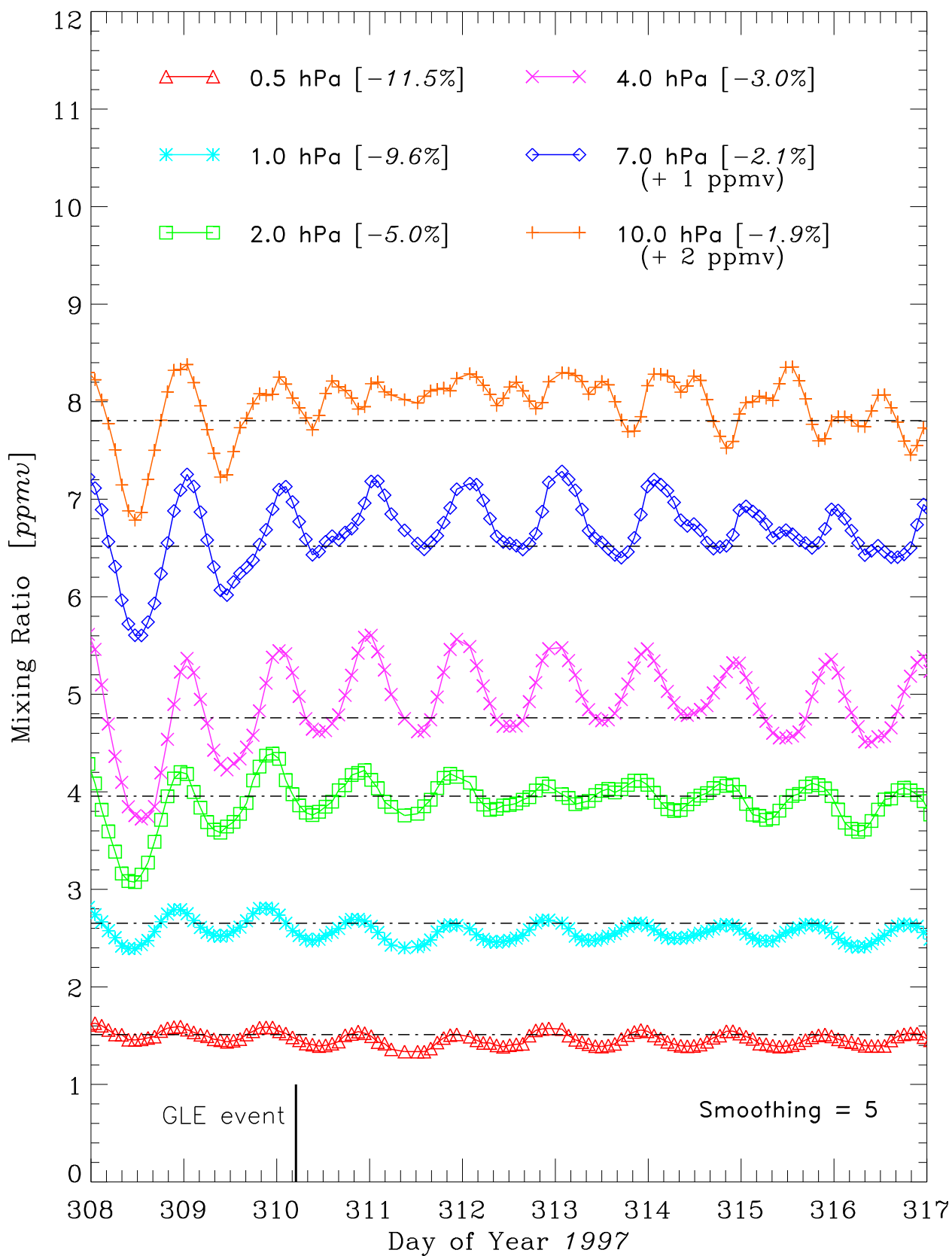
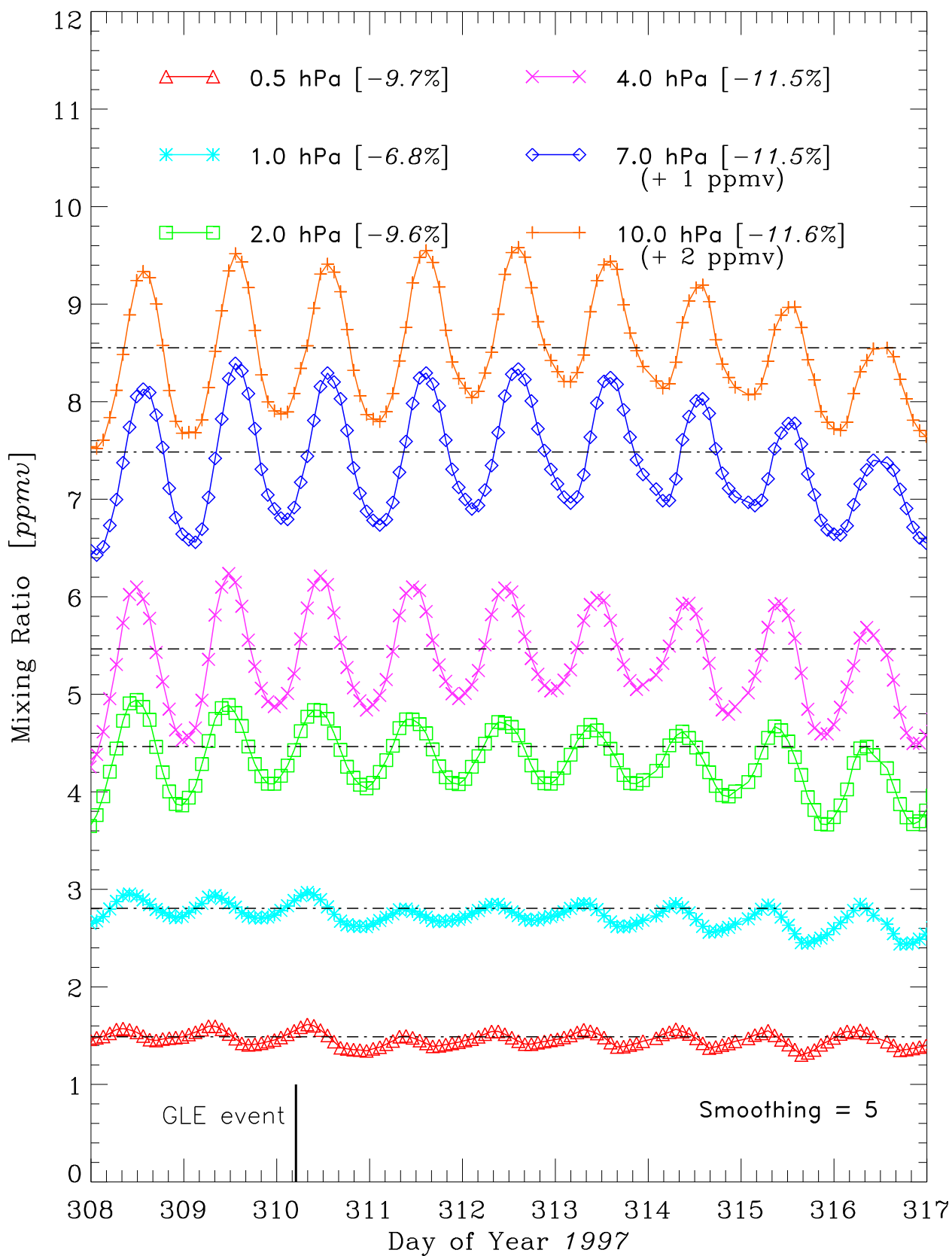


NOAA-11 SBUV/2 Ozone [orbit avg.] beginning 1997/11/04
GEOMAGNETIC LATITUDE range = $[-75^{\circ}, -65^{\circ}]$



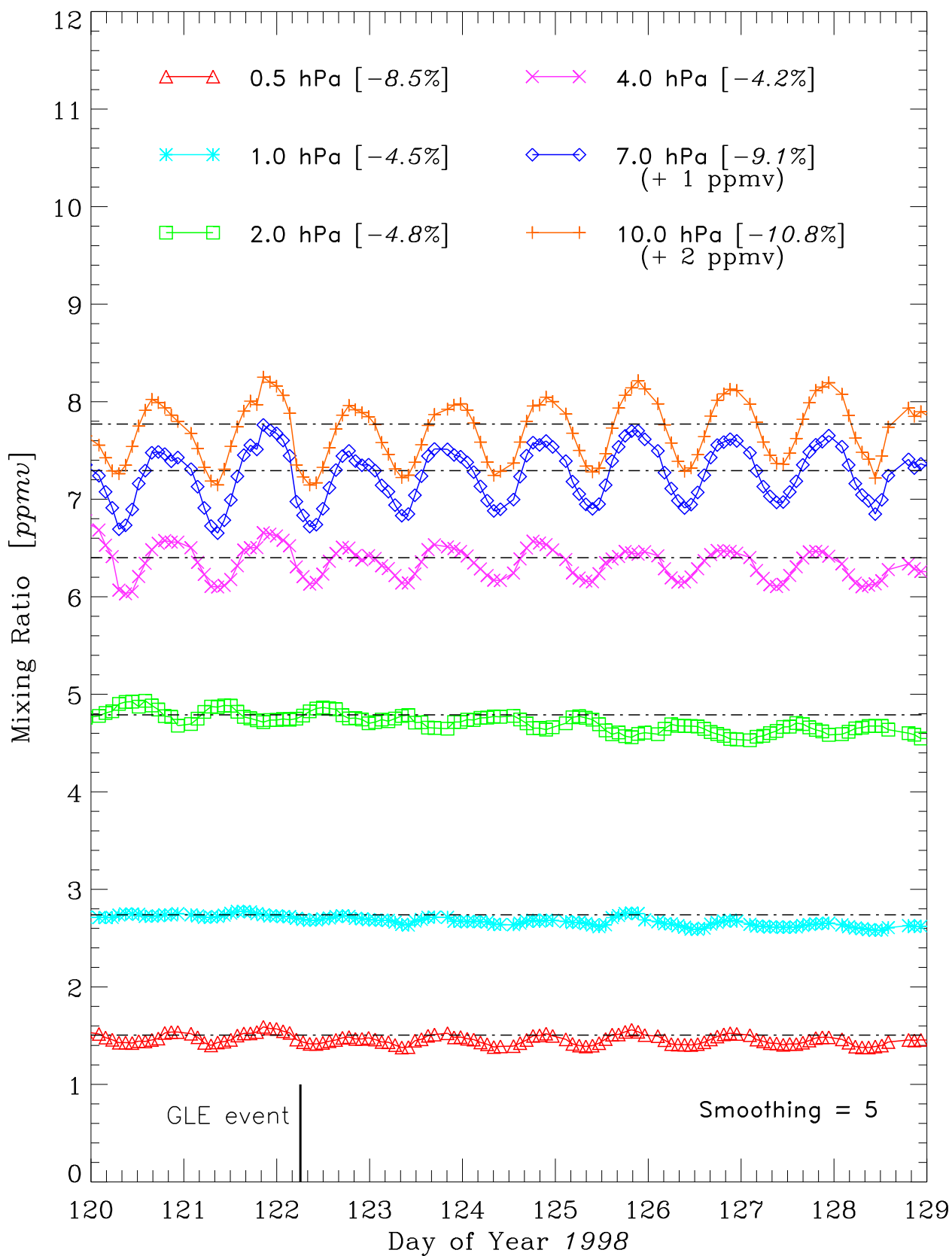
14:29:43 Wed Dec 24 2008

NOAA-14 SBUV/2 Ozone [orbit avg.] beginning 1997/11/04
GEOMAGNETIC LATITUDE range = $[-75^{\circ}, -65^{\circ}]$



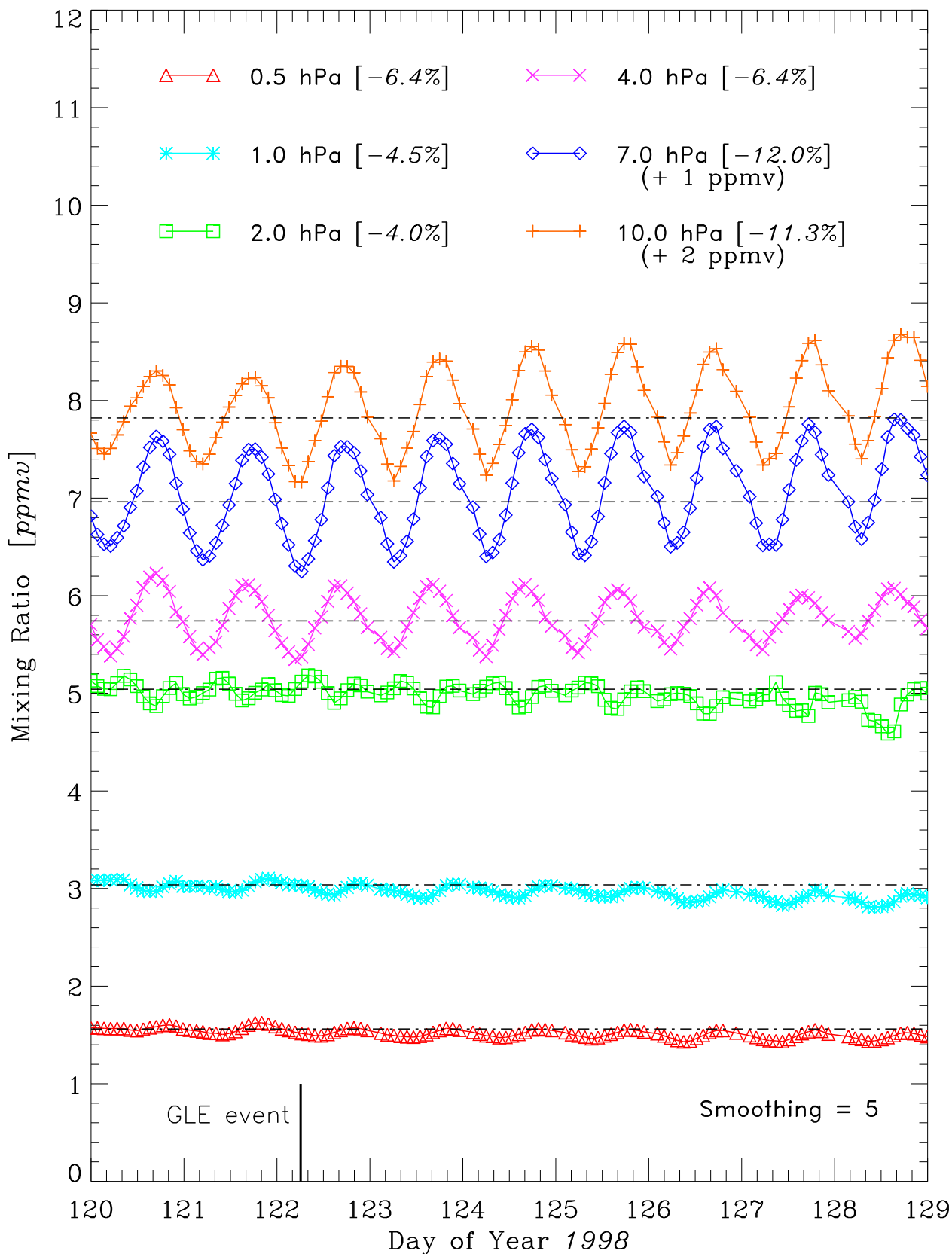
14:30:06 Wed Dec 24 2008

NOAA-11 SBUV/2 Ozone [orbit avg.] beginning 1998/05/00
GEOMAGNETIC LATITUDE range = [65°,75°]



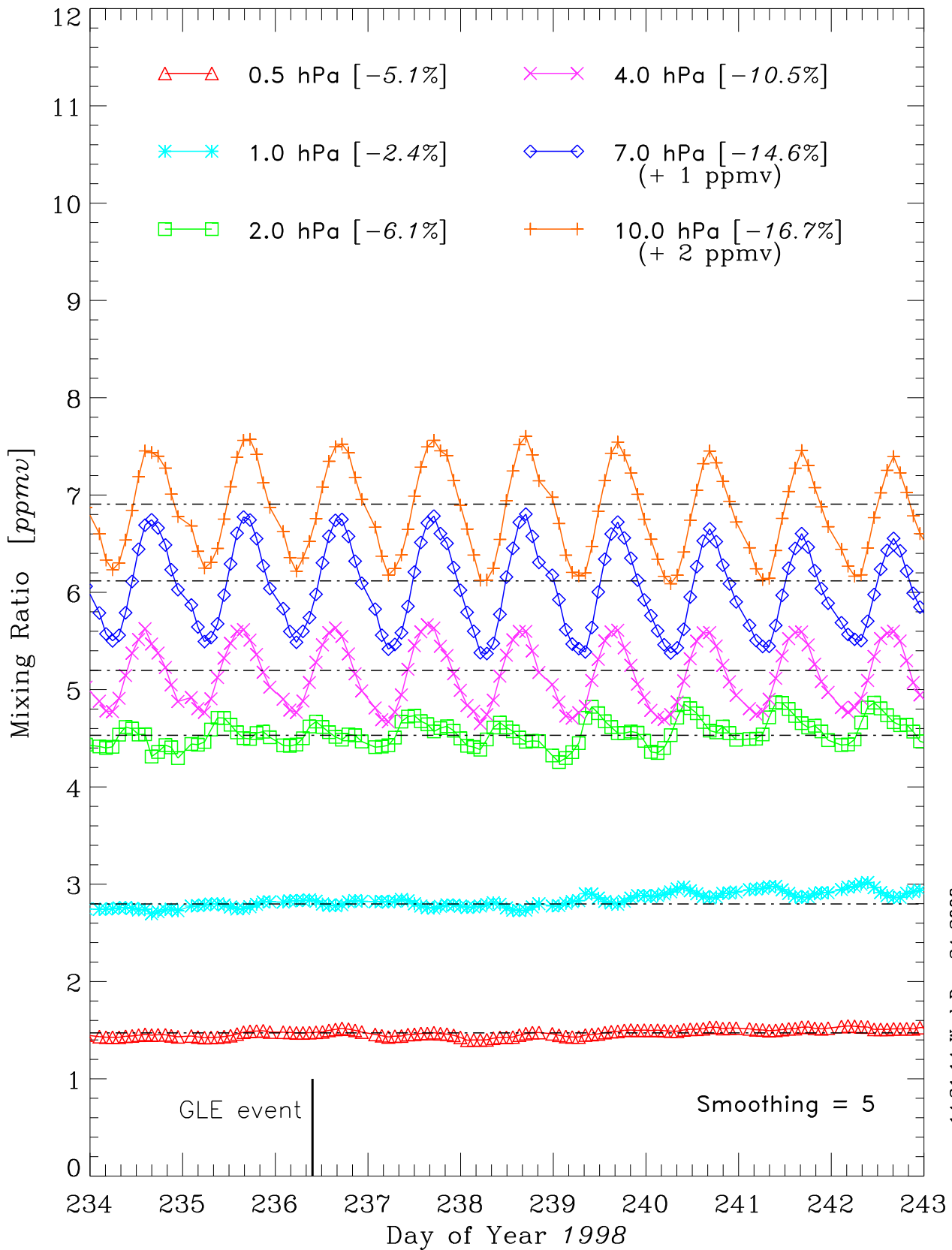
14:30:32 Wed Dec 24 2008

NOAA-14 SBUV/2 Ozone [orbit avg.] beginning 1998/05/00
GEOMAGNETIC LATITUDE range = [65°,75°]

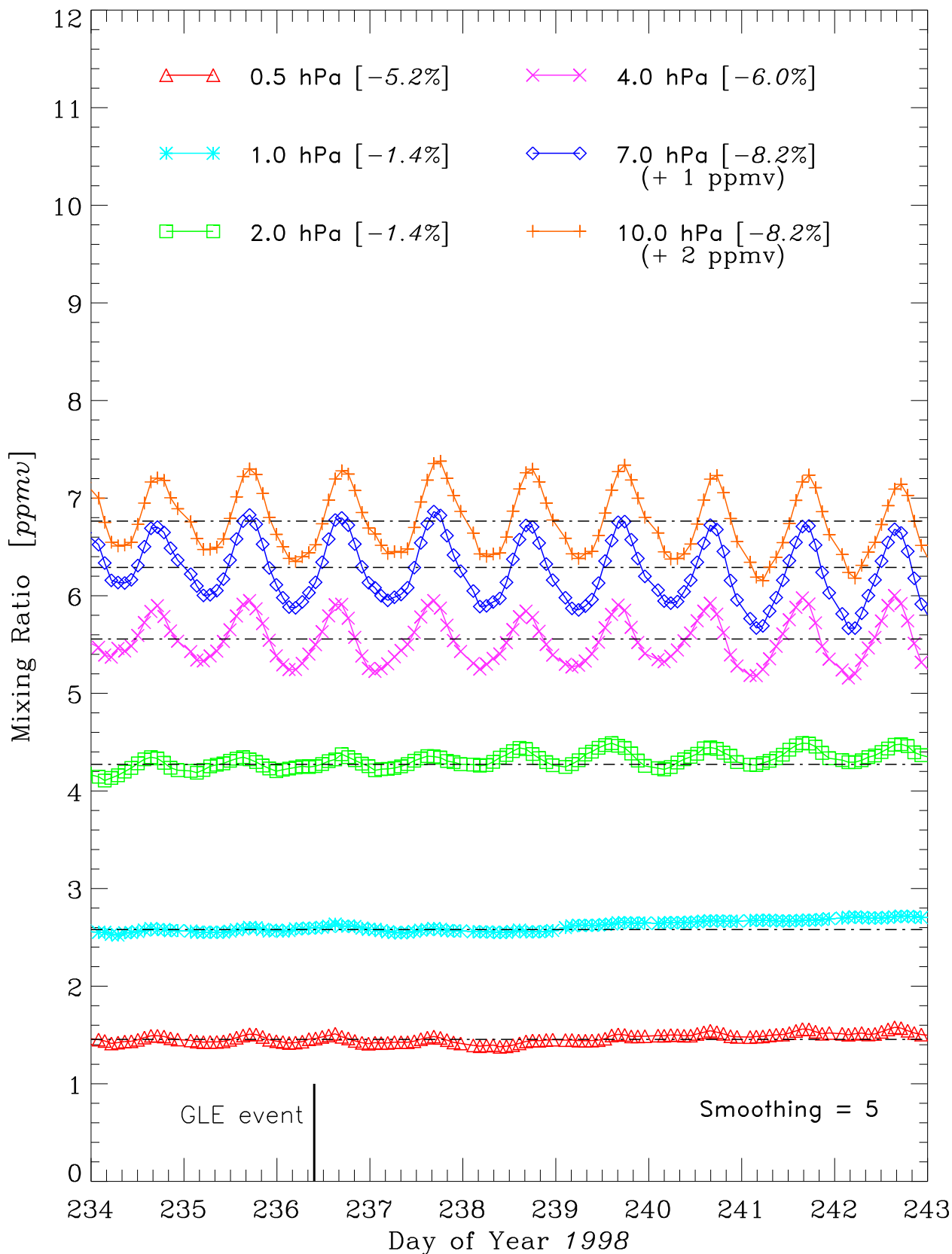


14:30:53 Wed Dec 24 2008

NOAA-14 SBUV/2 Ozone [orbit avg.] beginning 1998/08/22
GEOMAGNETIC LATITUDE range = [65°,75°]

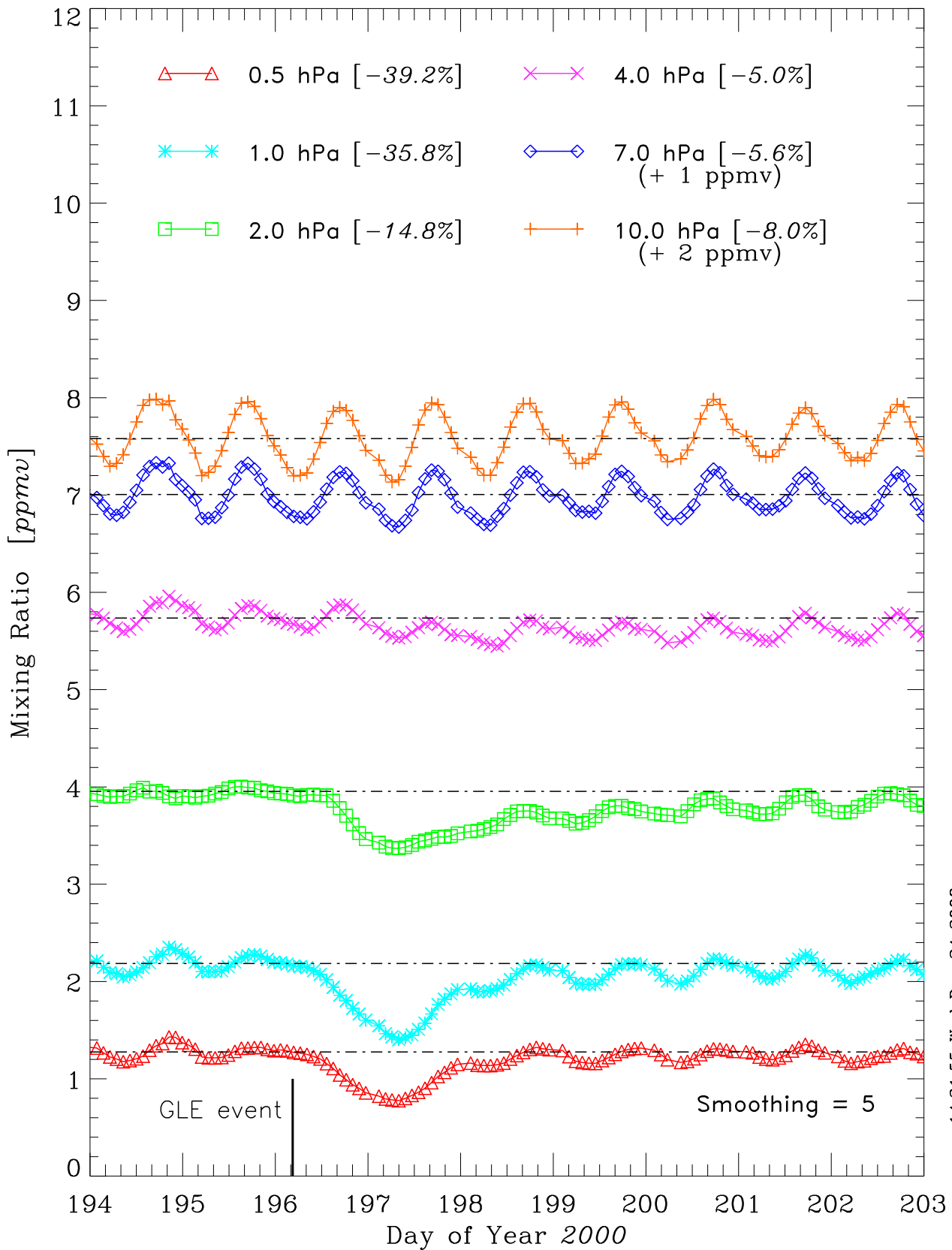


NOAA-11 SBUV/2 Ozone [orbit avg.] beginning 1998/08/22
GEOMAGNETIC LATITUDE range = [65°,75°]

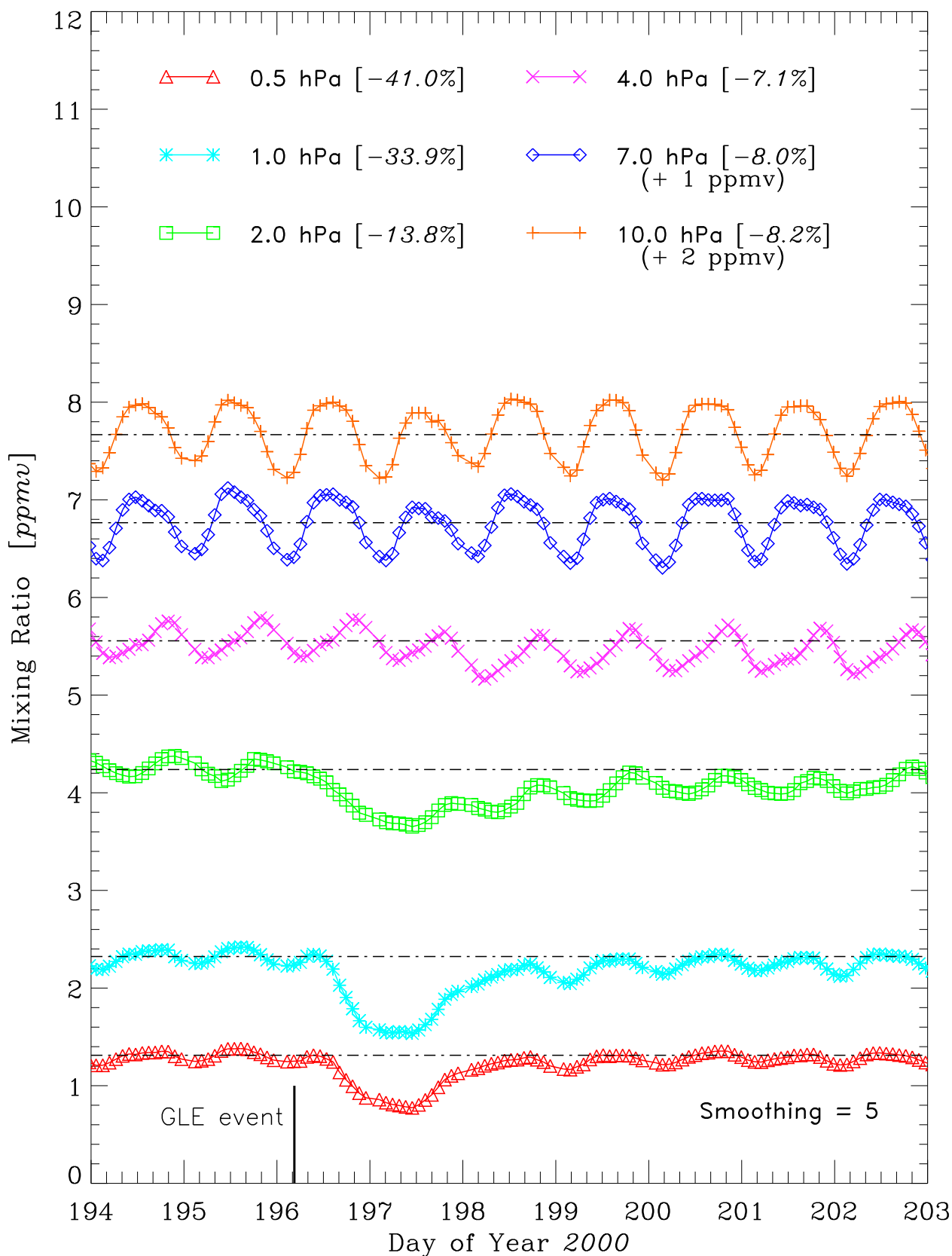


14:31:34 Wed Dec 24 2008

NOAA-11 SBUV/2 Ozone [orbit avg.] beginning 2000/07/12
GEOMAGNETIC LATITUDE range = [65°,75°]

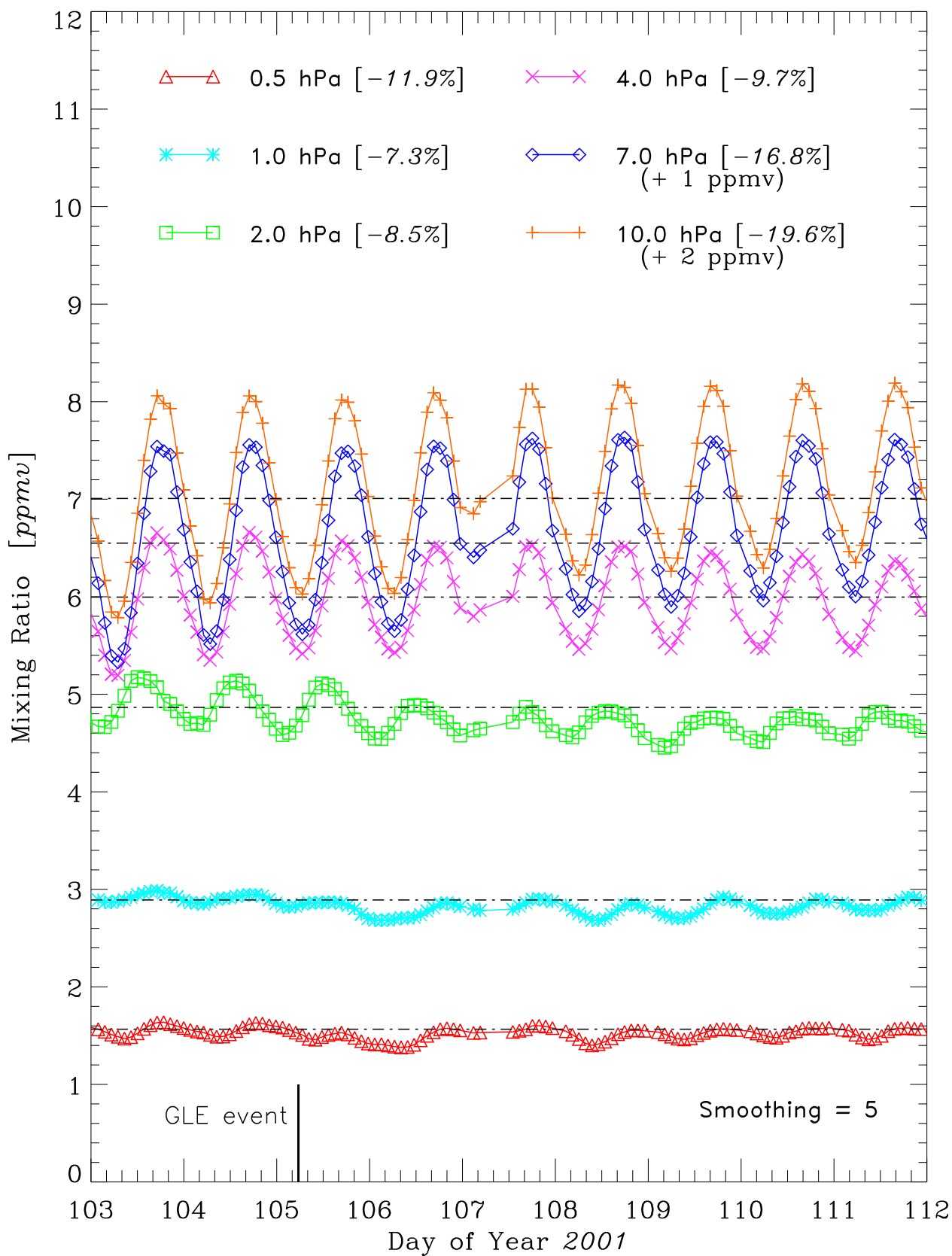


NOAA-14 SBUV/2 Ozone [orbit avg.] beginning 2000/07/12
GEOMAGNETIC LATITUDE range = [65°,75°]



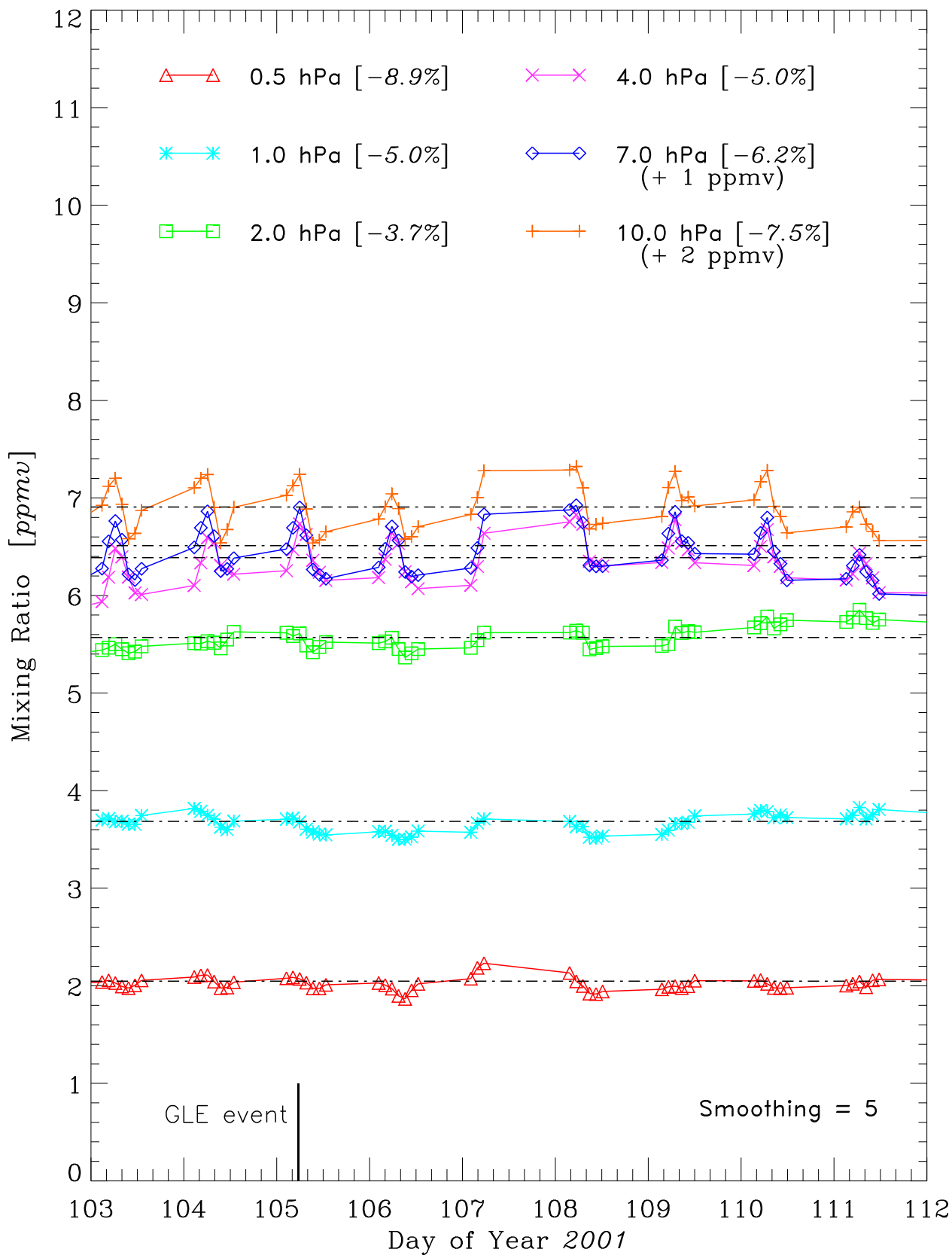
14:32:06 Wed Dec 24 2008

NOAA-16 SBUV/2 Ozone [orbit avg.] beginning 2001/04/13
GEOMAGNETIC LATITUDE range = [65°,75°]



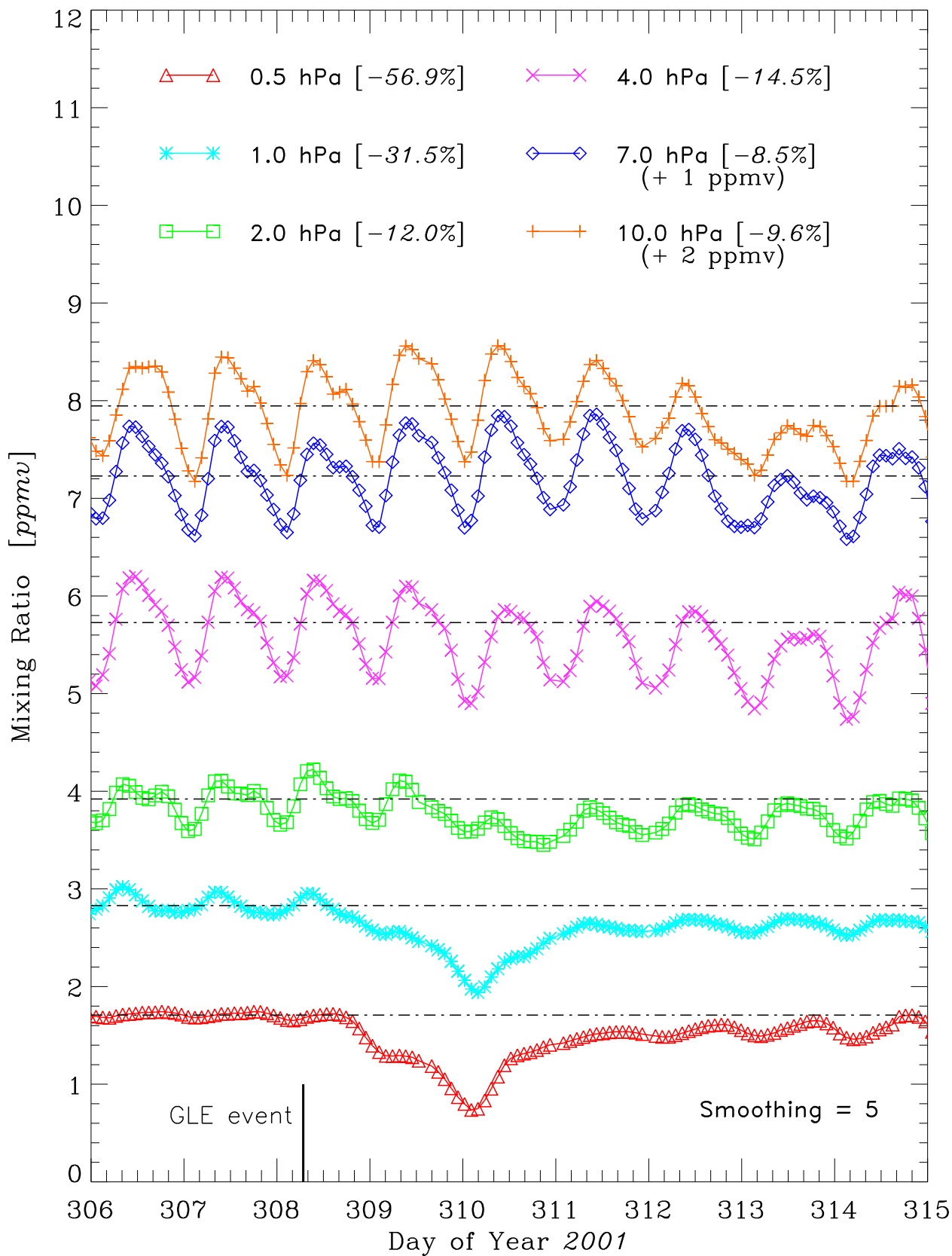
14:32:31 Wed Dec 24 2008

NOAA-16 SBUV/2 Ozone [orbit avg.] beginning 2001/04/13
GEOMAGNETIC LATITUDE range = [-75°, -65°]

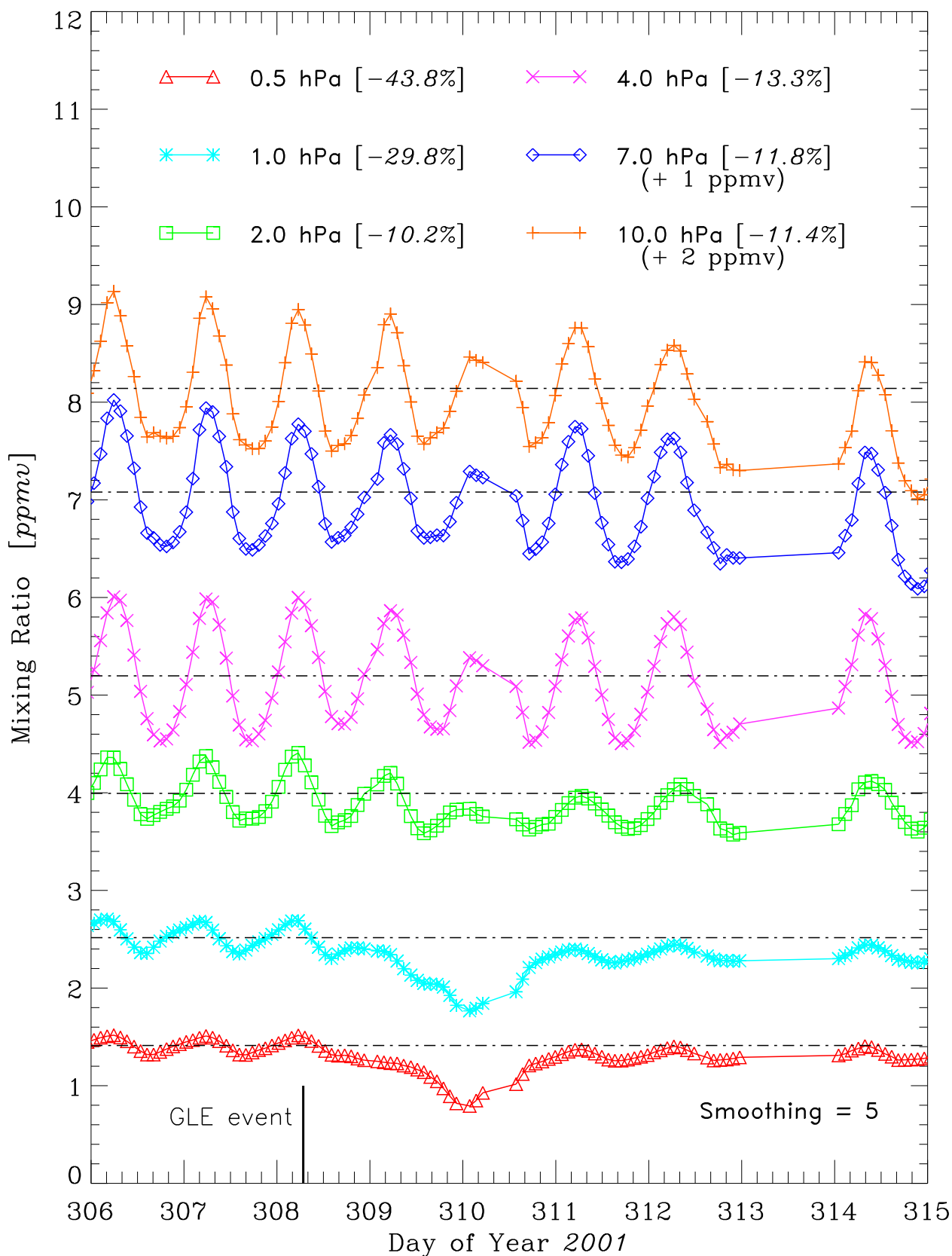


14:32:36 Wed Dec 24 2008

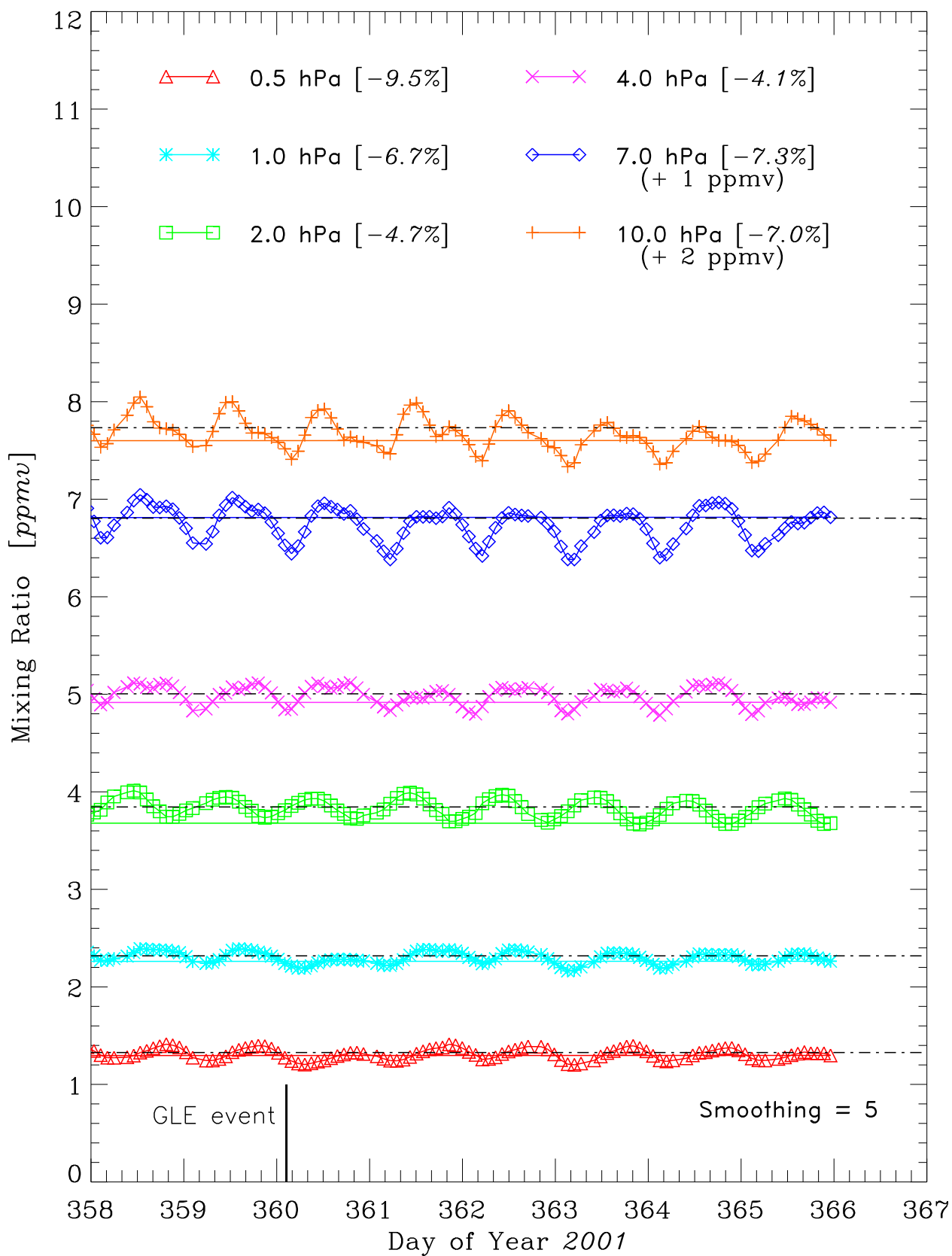
NOAA-14 SBUV/2 Ozone [orbit avg.] beginning 2001/11/02
GEOMAGNETIC LATITUDE range = $[-75^{\circ}, -65^{\circ}]$



NOAA-16 SBUV/2 Ozone [orbit avg.] beginning 2001/11/02
GEOMAGNETIC LATITUDE range = $[-75^{\circ}, -65^{\circ}]$

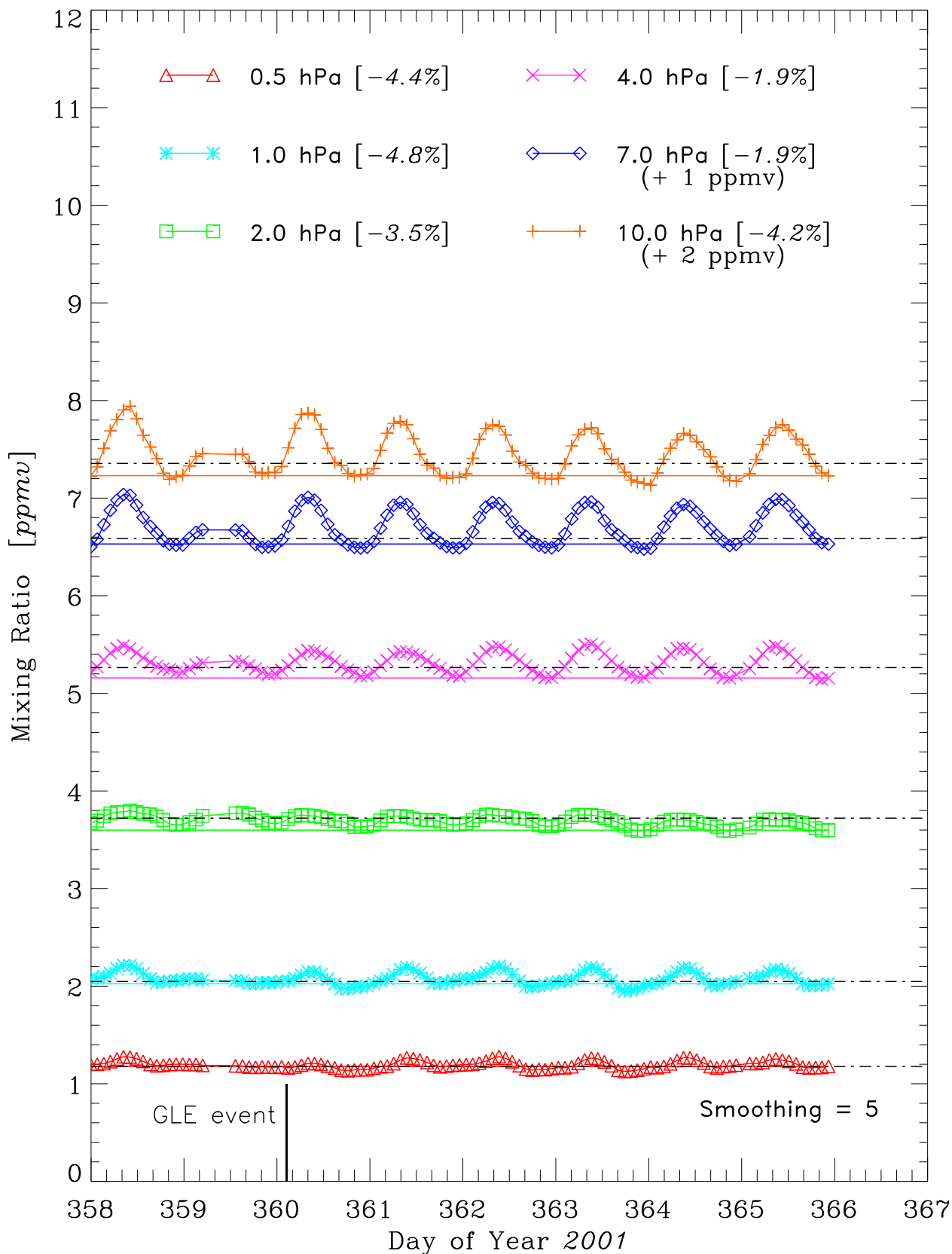


NOAA-14 SBUV/2 Ozone [orbit avg.] beginning 2001/12/24
GEOMAGNETIC LATITUDE range = $[-75^{\circ}, -65^{\circ}]$

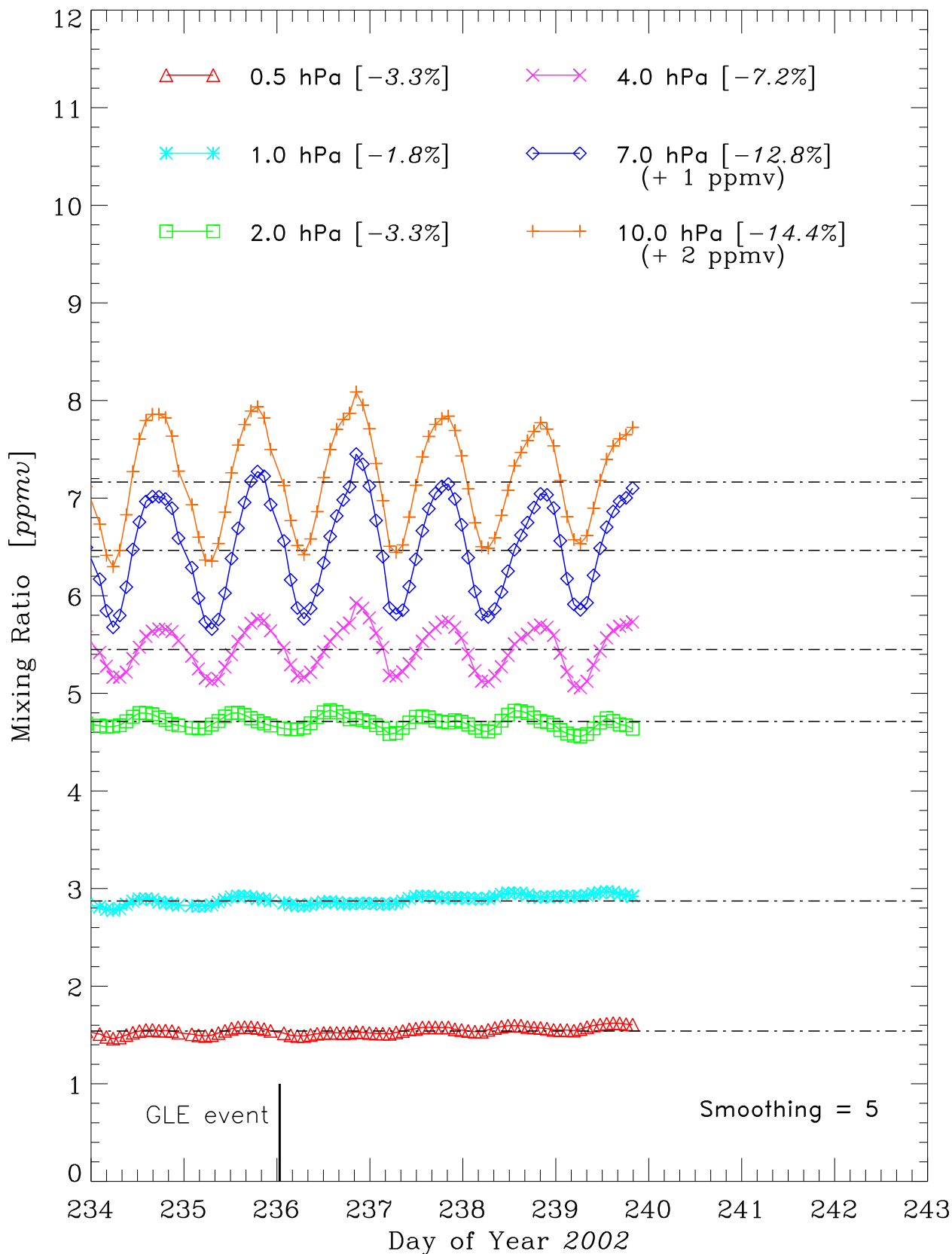


14:33:28 Wed Dec 24 2008

NOAA-16 SBUV/2 Ozone [*orbit avg.*] beginning 2001/12/24
GEOMAGNETIC LATITUDE range = $[-75^{\circ}, -65^{\circ}]$

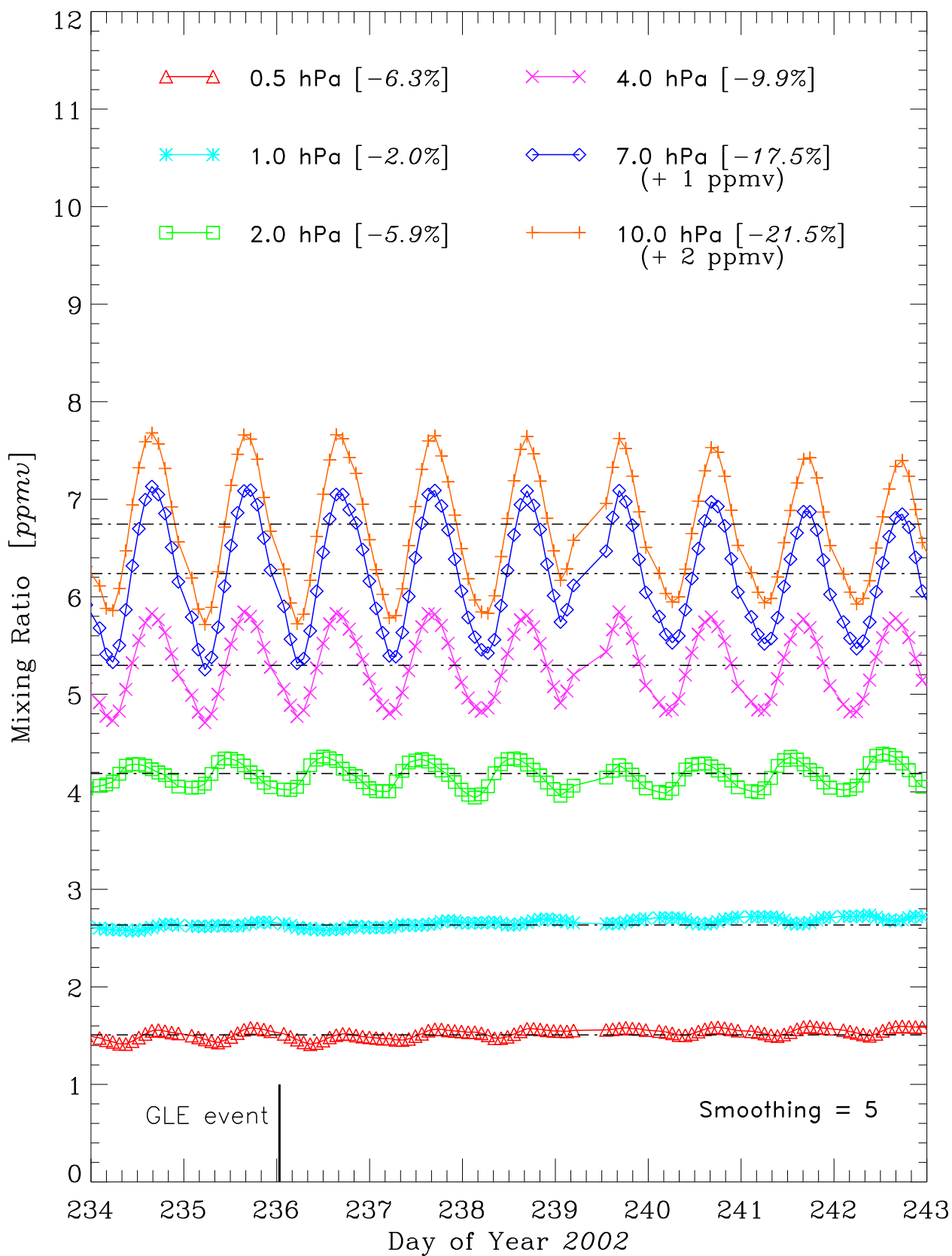


NOAA-14 SBUV/2 Ozone [orbit avg.] beginning 2002/08/22
 GEOMAGNETIC LATITUDE range = [65°,75°]



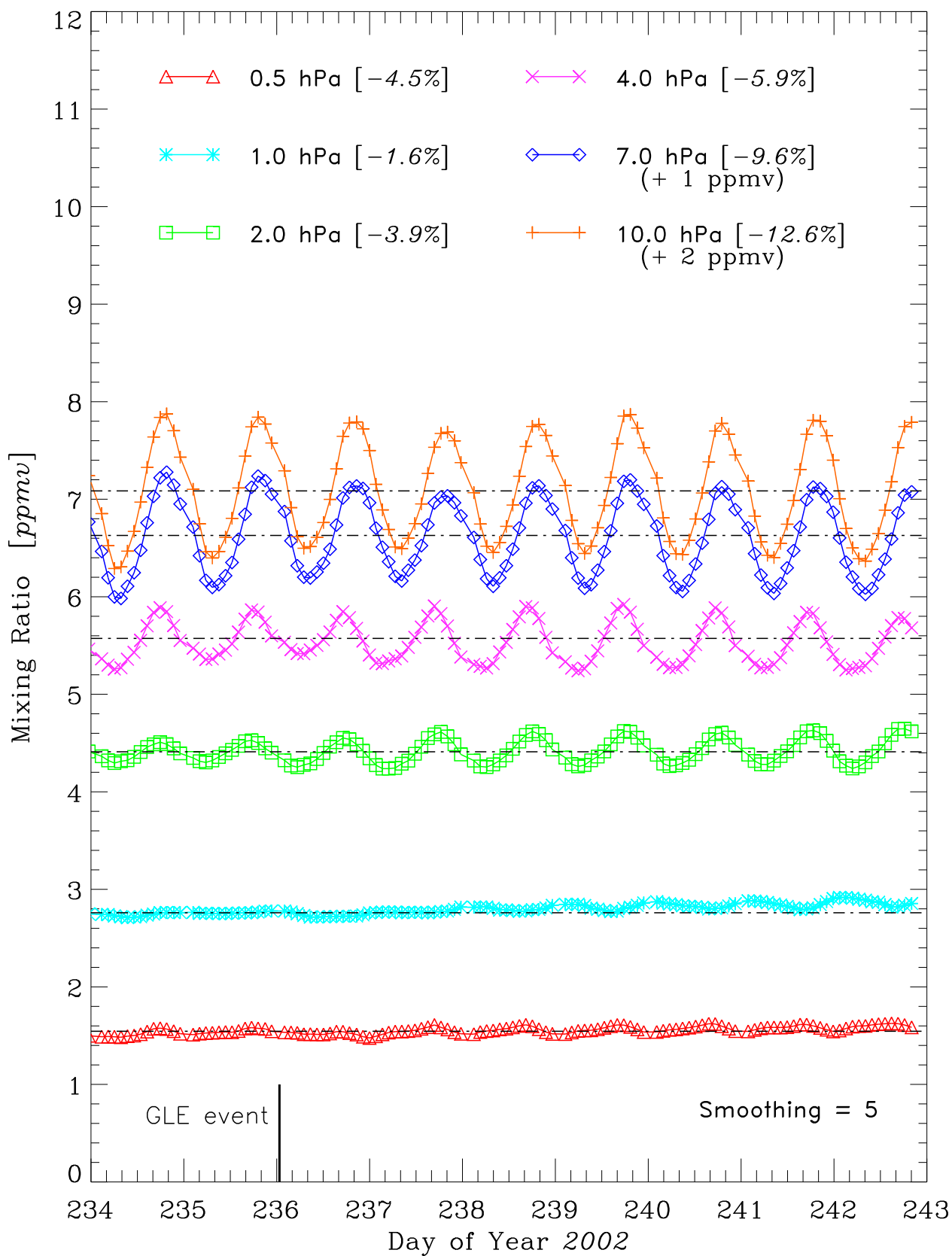
14:33:57 Wed Dec 24 2008

NOAA-16 SBUV/2 Ozone [orbit avg.] beginning 2002/08/22
GEOMAGNETIC LATITUDE range = [65°,75°]



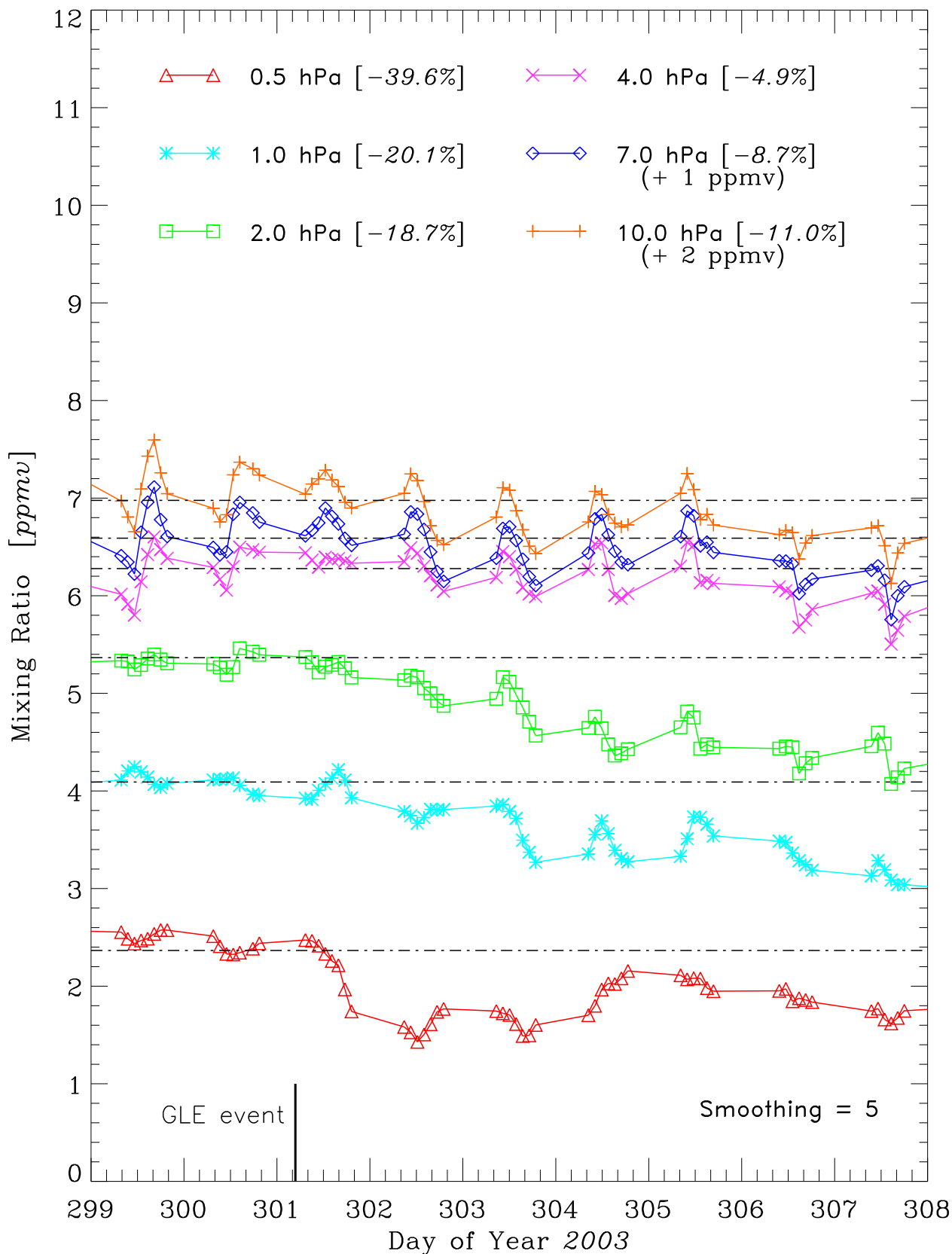
14:34:22 Wed Dec 24 2008

NOAA-17 SBUV/2 Ozone [orbit avg.] beginning 2002/08/22
GEOMAGNETIC LATITUDE range = [65°,75°]



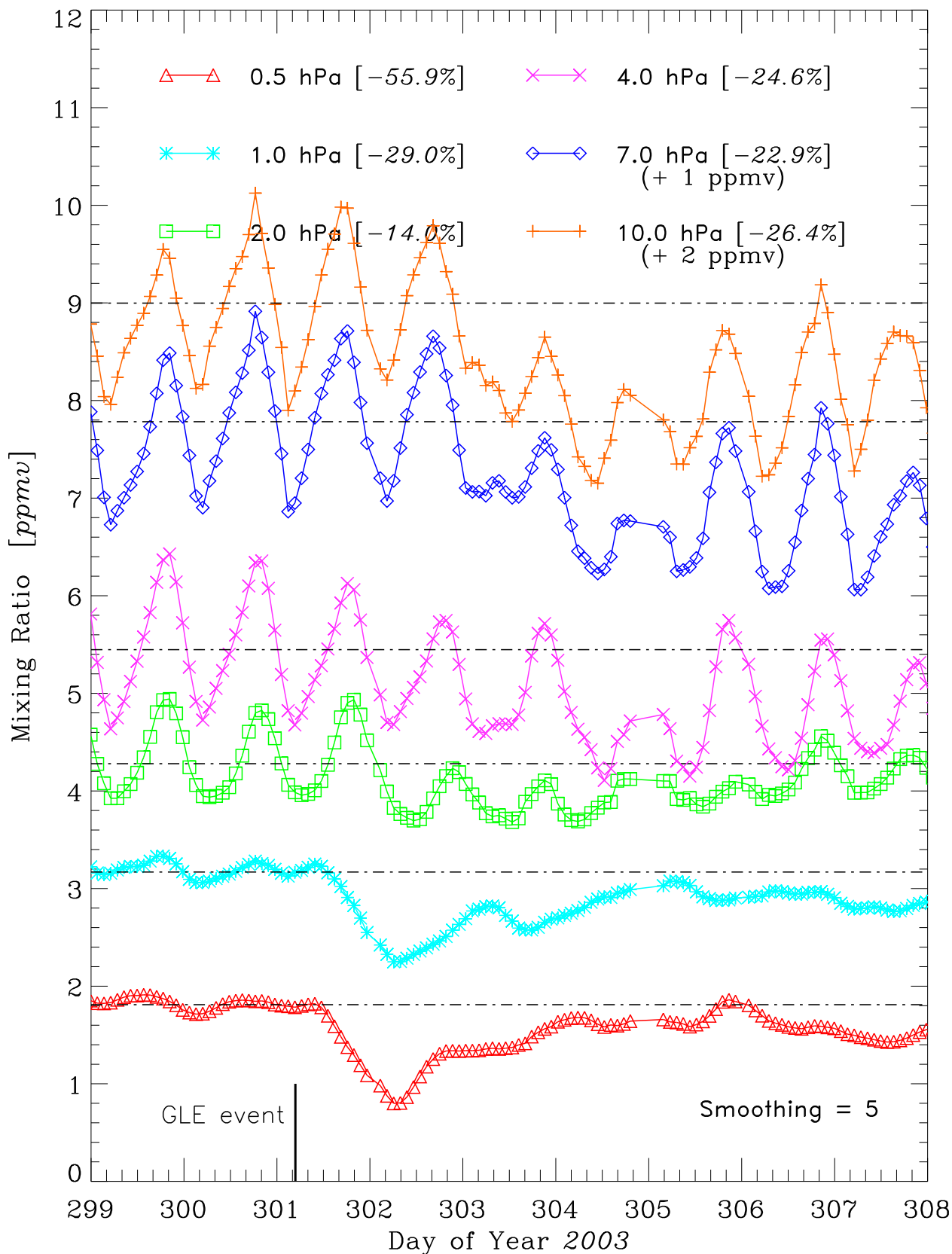
14:34:32 Wed Dec 24 2008

NOAA-14 SBUV/2 Ozone [orbit avg.] beginning 2003/10/26
 GEOMAGNETIC LATITUDE range = [65°,75°]



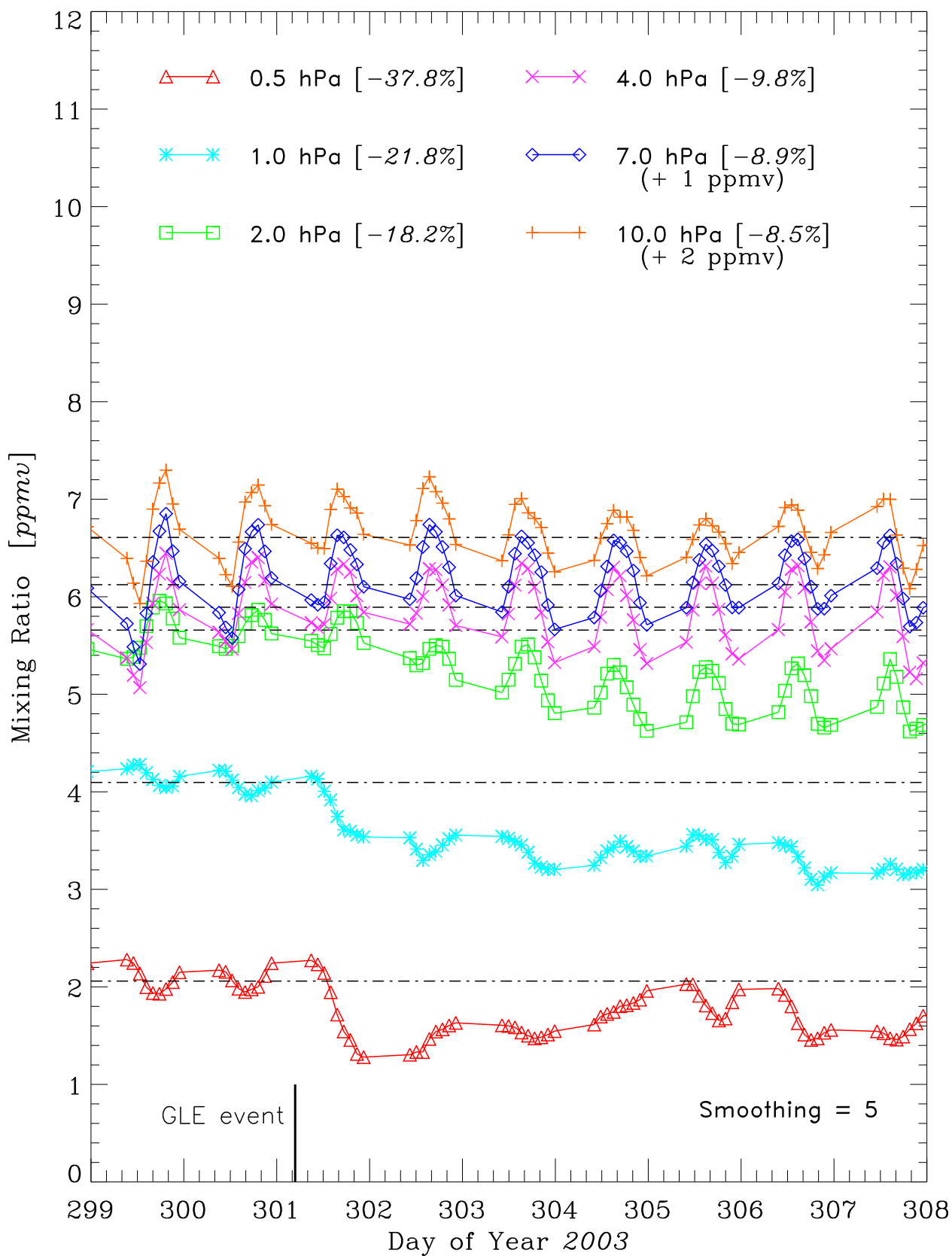
14:35:18 Wed Dec 24 2008

NOAA-14 SBUV/2 Ozone [orbit avg.] beginning 2003/10/26
GEOMAGNETIC LATITUDE range = $[-75^{\circ}, -65^{\circ}]$



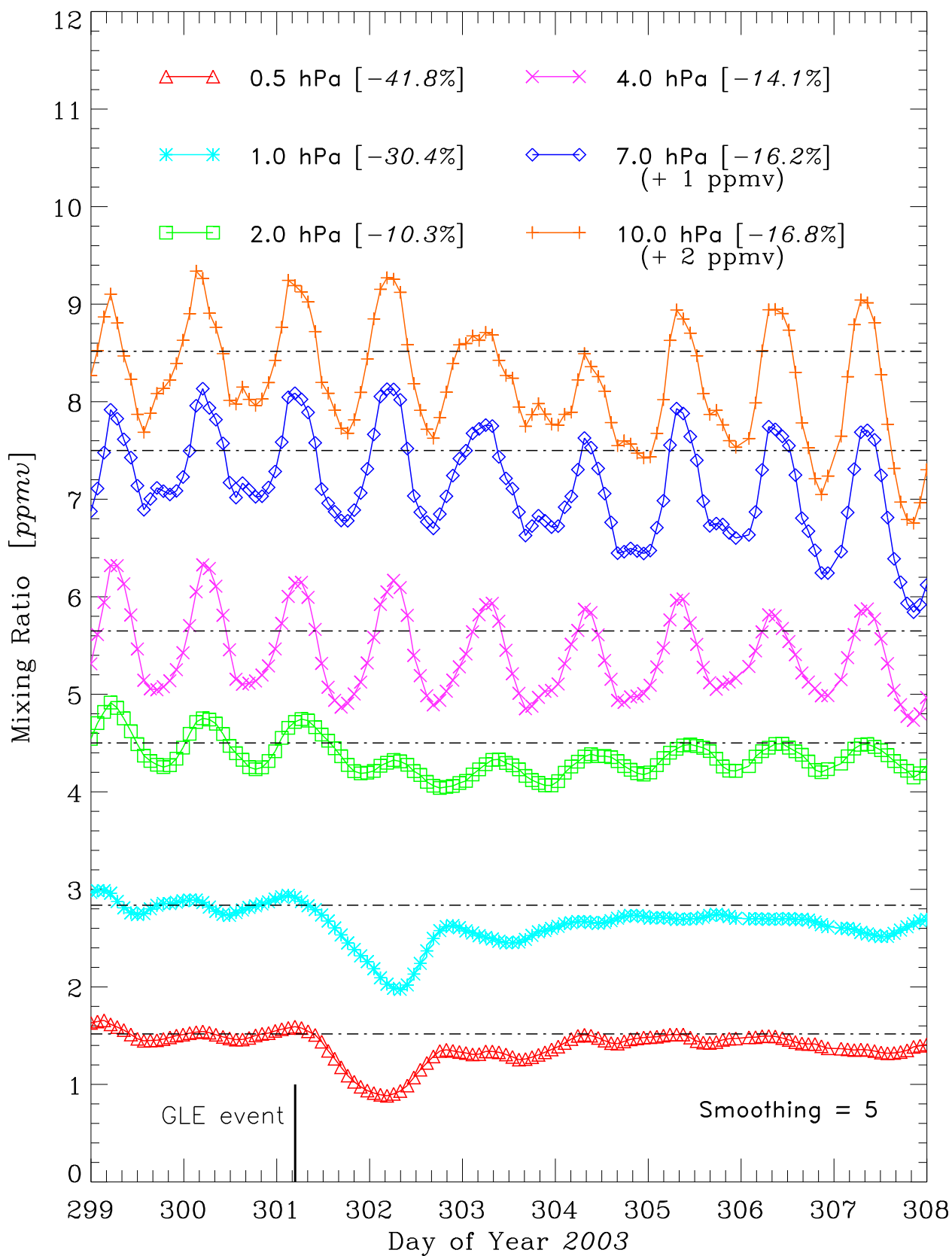
14:35:22 Wed Dec 24 2008

NOAA-16 SBUV/2 Ozone [orbit avg.] beginning 2003/10/26
GEOMAGNETIC LATITUDE range = [65°,75°]



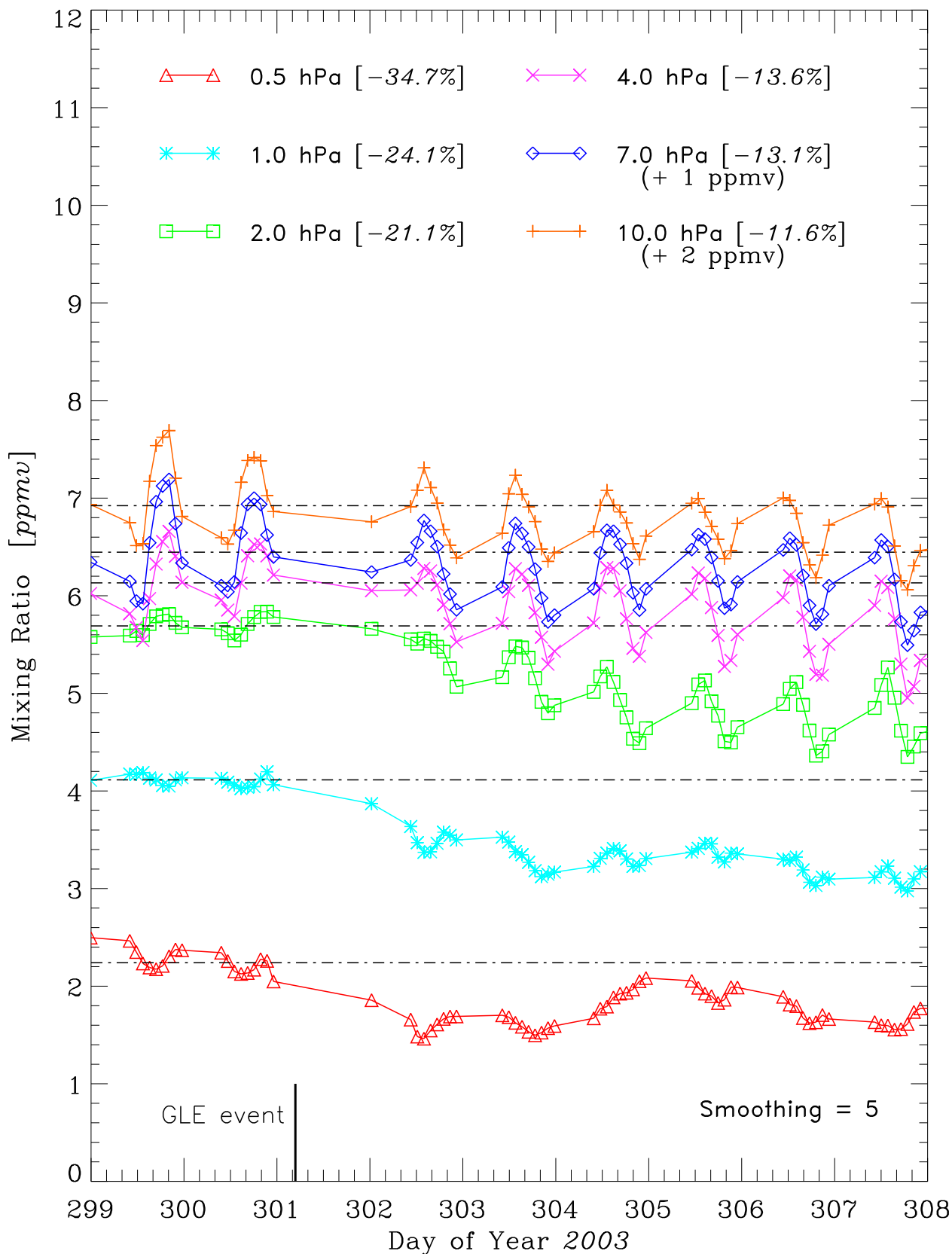
14:35:35 Wed Dec 24 2008

NOAA-16 SBUV/2 Ozone [orbit avg.] beginning 2003/10/26
GEOMAGNETIC LATITUDE range = $[-75^{\circ}, -65^{\circ}]$



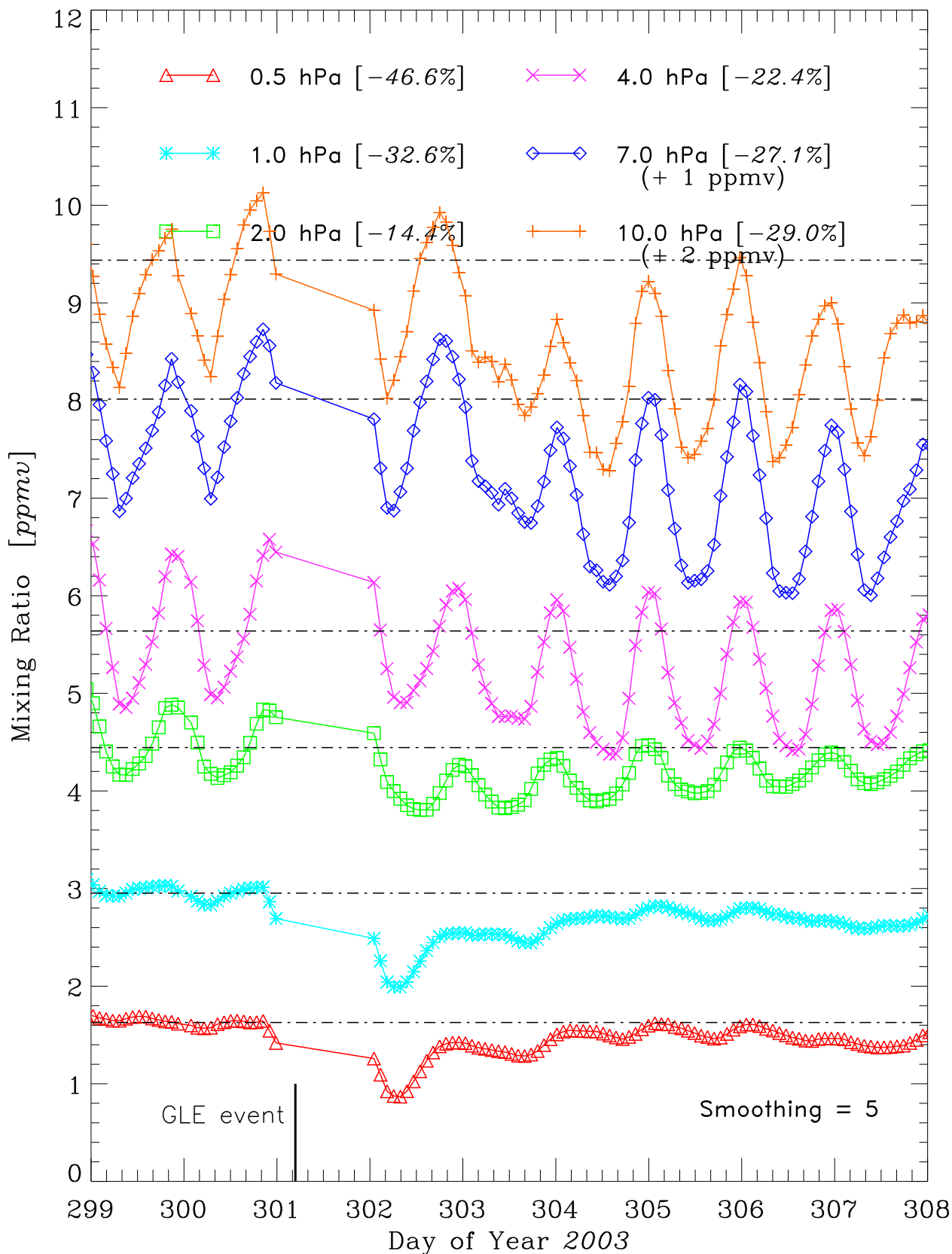
14:35:38 Wed Dec 24 2008

NOAA-17 SBUV/2 Ozone [orbit avg.] beginning 2003/10/26
GEOMAGNETIC LATITUDE range = [65°,75°]



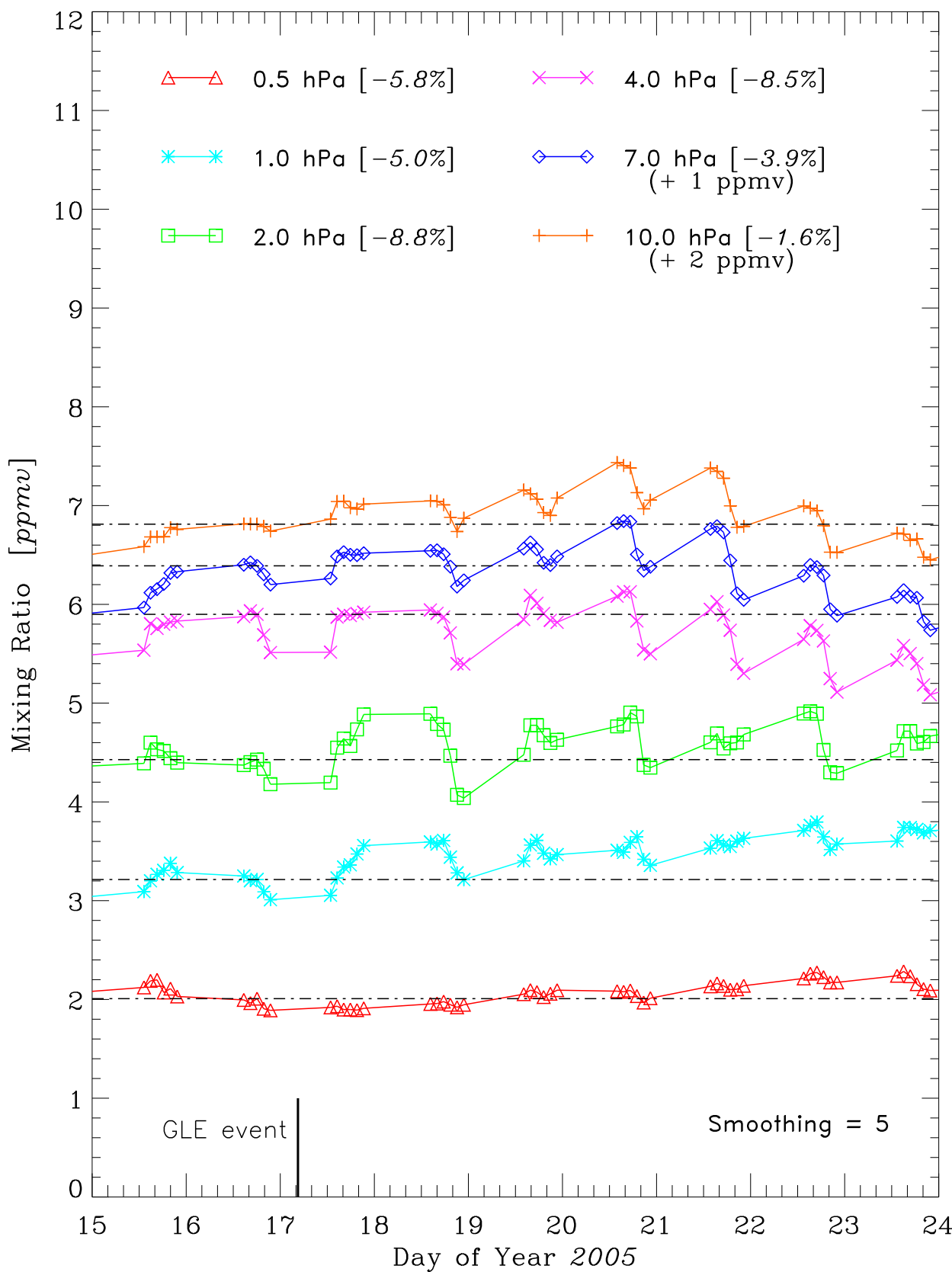
14:35:47 Wed Dec 24 2008

NOAA-17 SBUV/2 Ozone [orbit avg.] beginning 2003/10/26
GEOMAGNETIC LATITUDE range = $[-75^{\circ}, -65^{\circ}]$



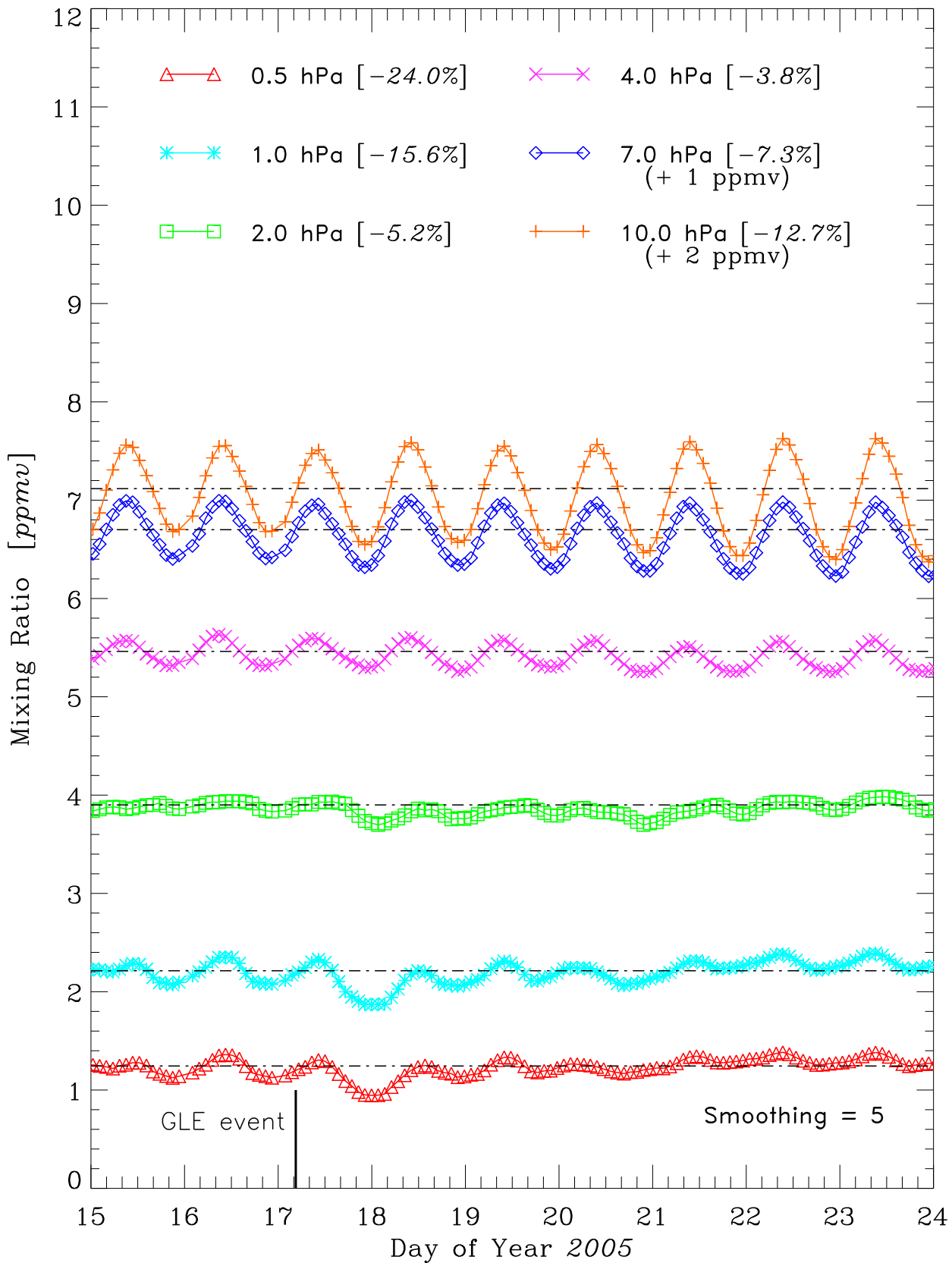
14:35:50 Wed Dec 24 2008

NOAA-16 SBUV/2 Ozone [orbit avg.] beginning 2005/01/15
GEOMAGNETIC LATITUDE range = [65°,75°]



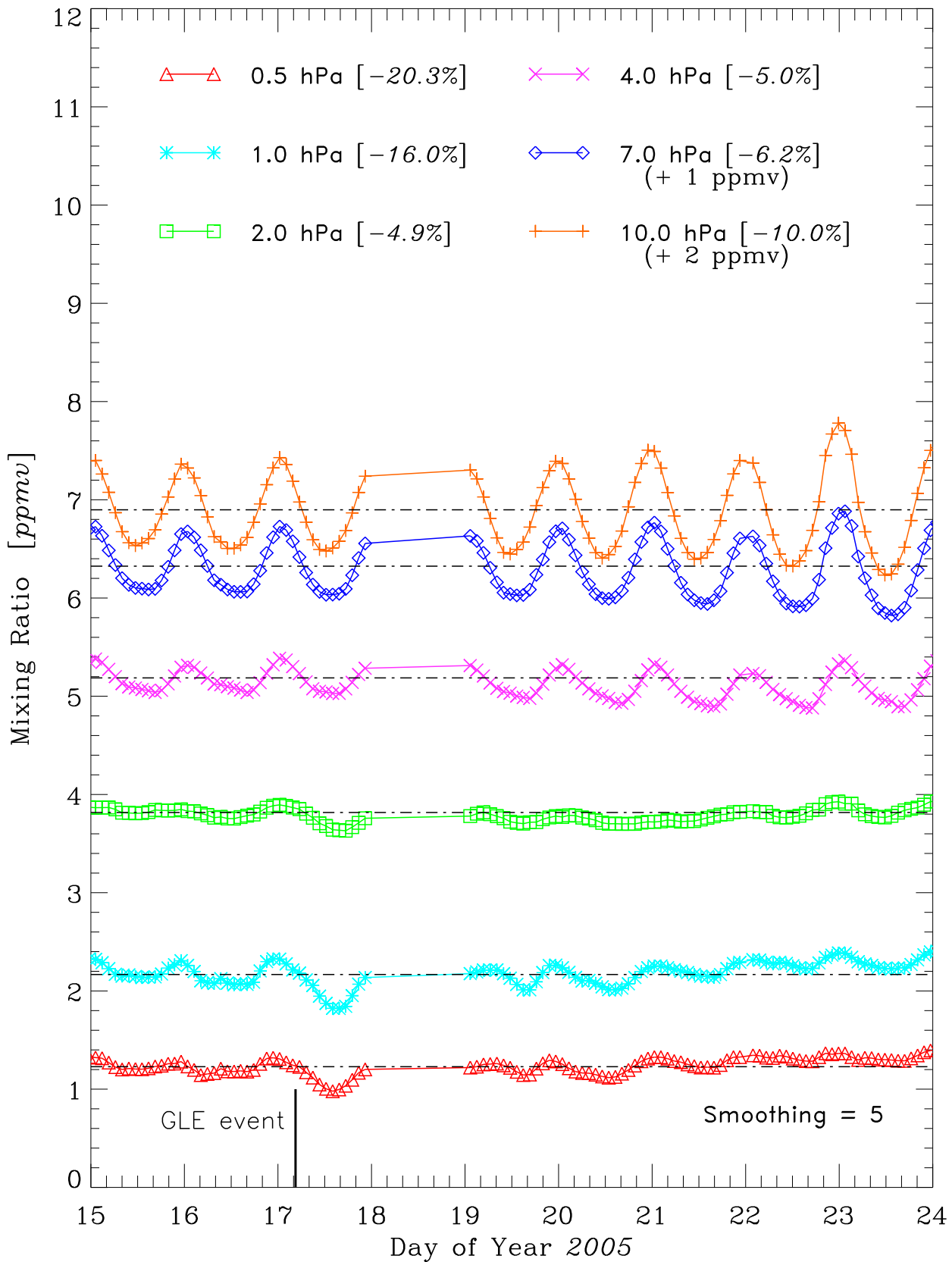
14:36:23 Wed Dec 24 2008

NOAA-16 SBUV/2 Ozone [*orbit avg.*] beginning 2005/01/15
GEOMAGNETIC LATITUDE range = $[-75^{\circ}, -65^{\circ}]$



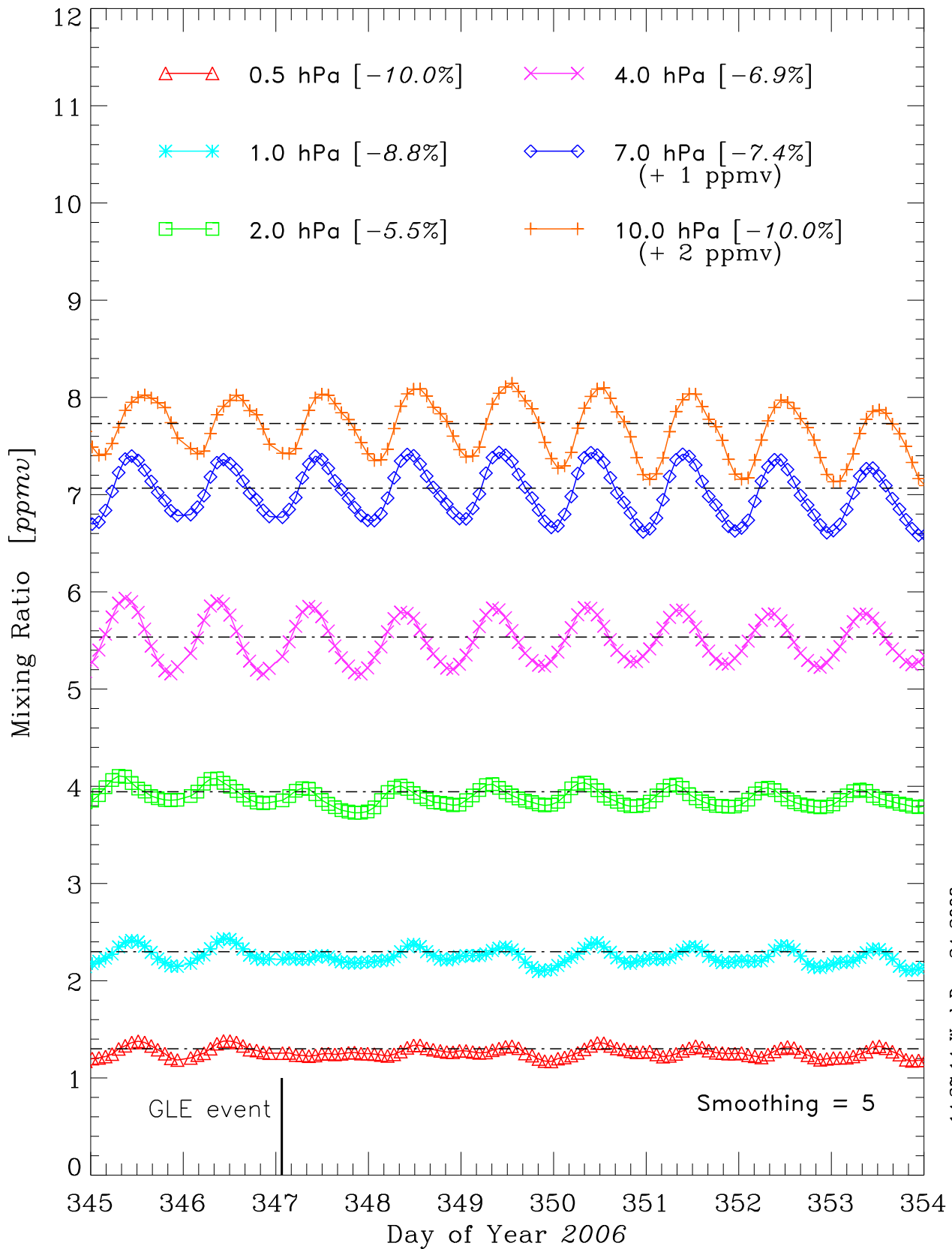
14:36:27 Wed Dec 24 2008

NOAA-17 SBUV/2 Ozone [orbit avg.] beginning 2005/01/15
GEOMAGNETIC LATITUDE range = $[-75^{\circ}, -65^{\circ}]$

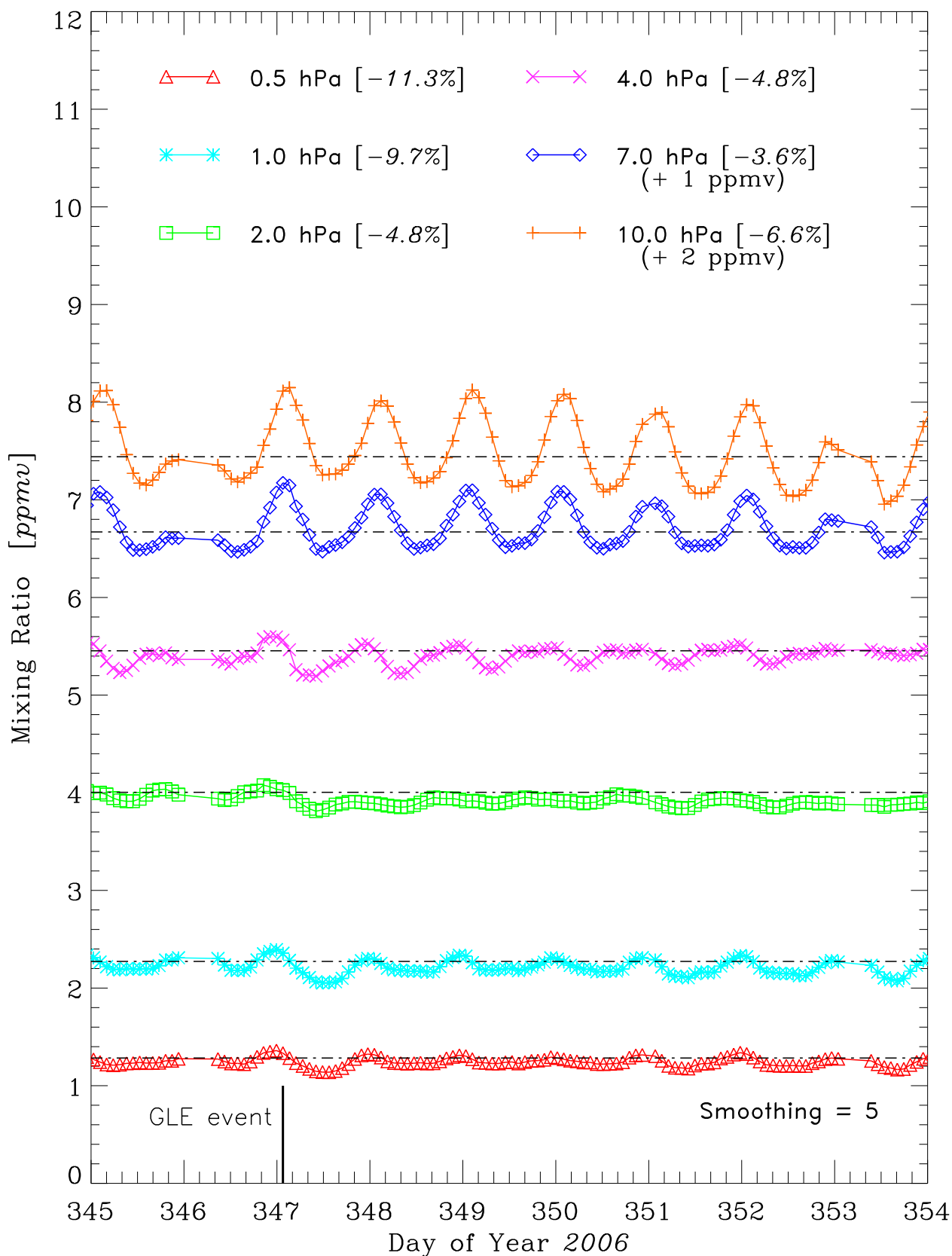


14:36:52 Wed Dec 24 2008

NOAA-16 SBUV/2 Ozone [orbit avg.] beginning 2006/12/11
GEOMAGNETIC LATITUDE range = $[-75^{\circ}, -65^{\circ}]$



NOAA-17 SBUV/2 Ozone [orbit avg.] beginning 2006/12/11
GEOMAGNETIC LATITUDE range = $[-75^{\circ}, -65^{\circ}]$



14:37:25 Wed Dec 24 2008

NOAA-18 SBUV/2 Ozone [orbit avg.] beginning 2006/12/11
GEOMAGNETIC LATITUDE range = $[-75^\circ, -65^\circ]$

