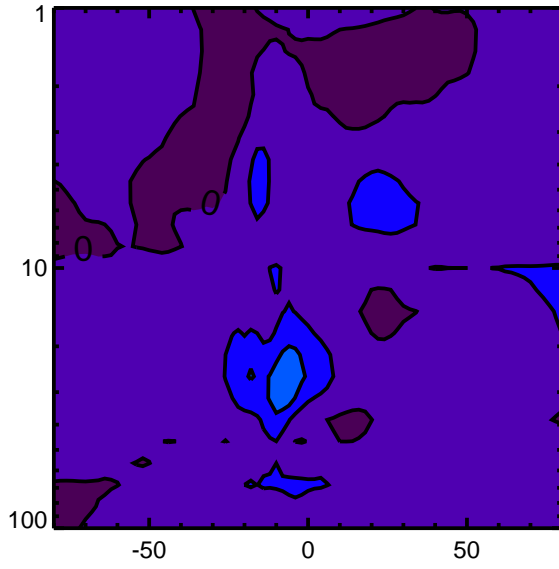
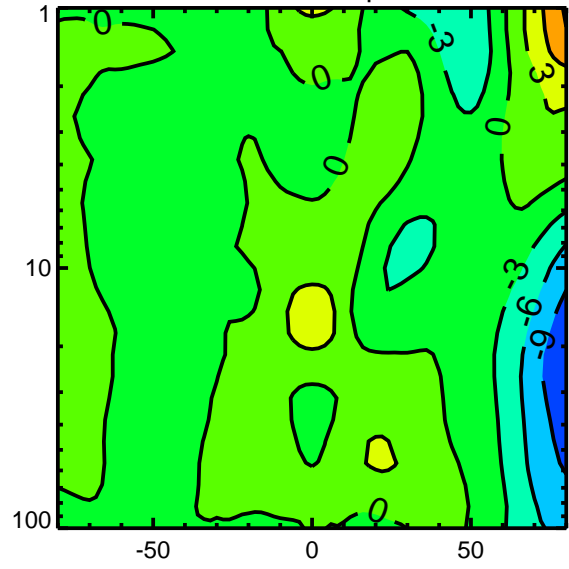


# MLS 2022 Monthly ZM Anomalies (N2O, HNO3, and HCl are %)

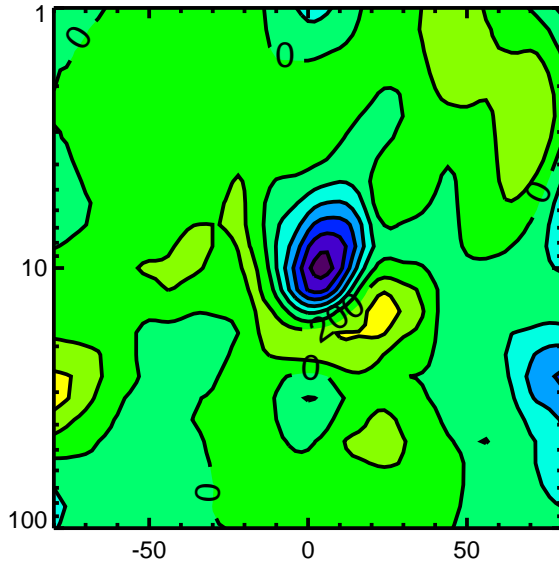
## JAN H2O



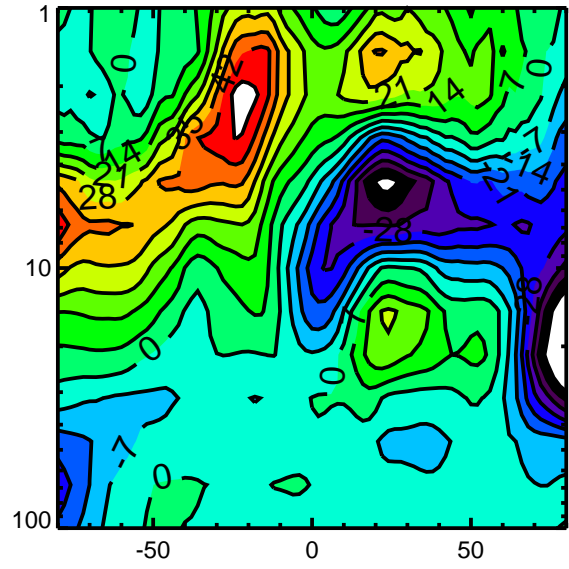
## JAN Temp



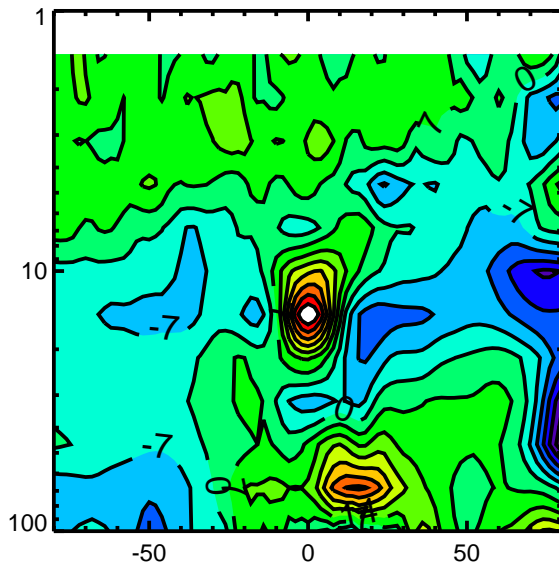
## JAN O3



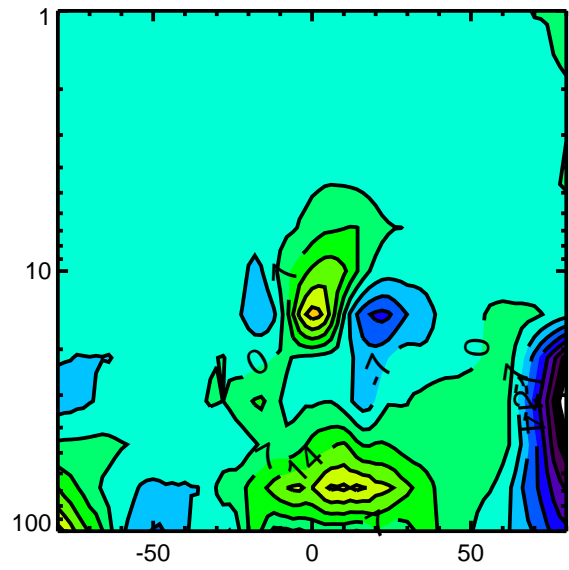
## JAN N2O



## JAN HNO3

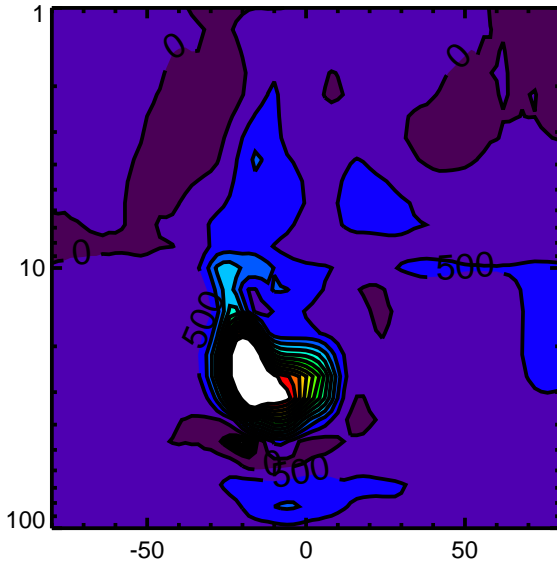


## JAN HCl

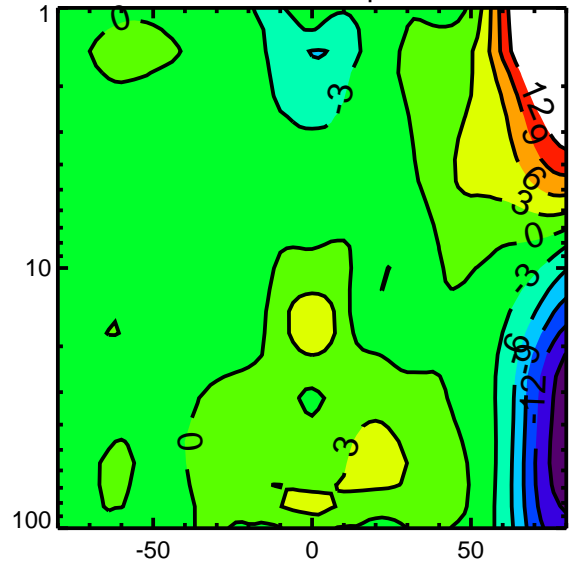


# MLS 2022 Monthly ZM Anomalies (N2O, HNO3, and HCl are %)

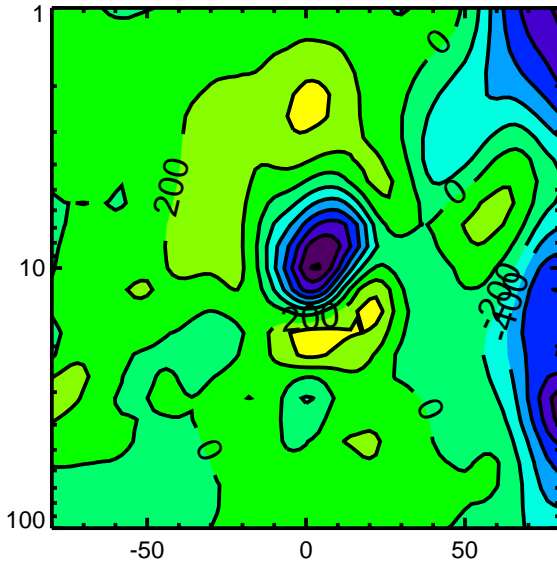
## FEB H2O



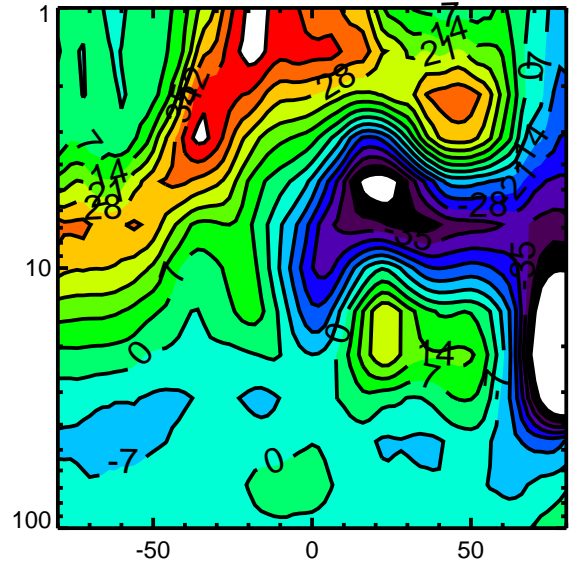
## FEB Temp



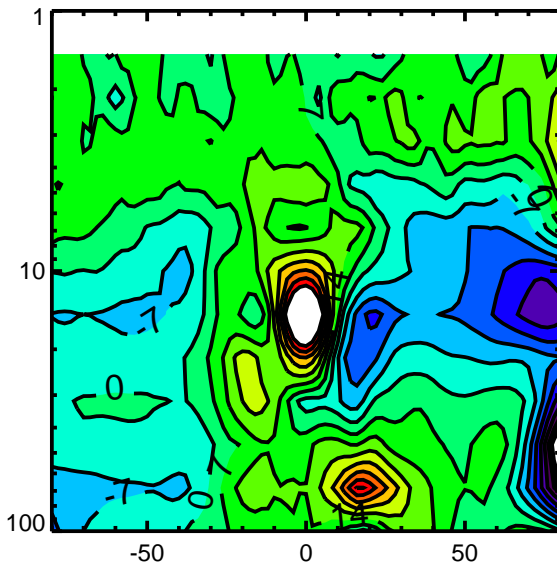
## FEB O3



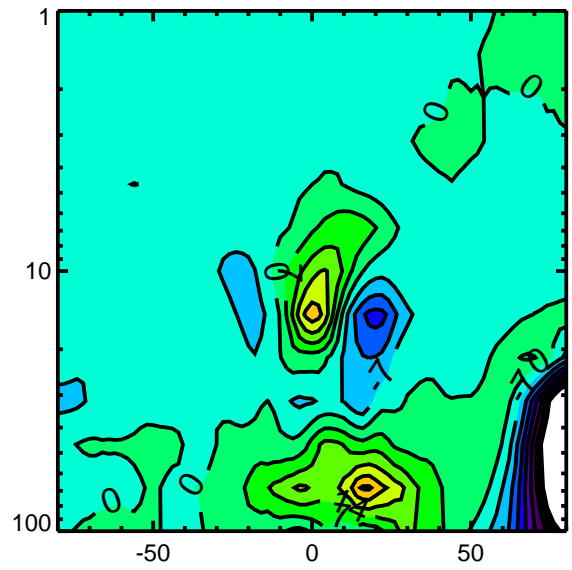
## FEB N2O



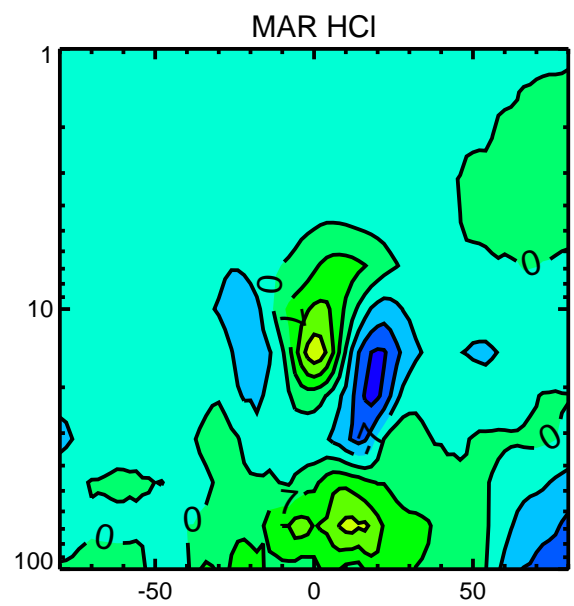
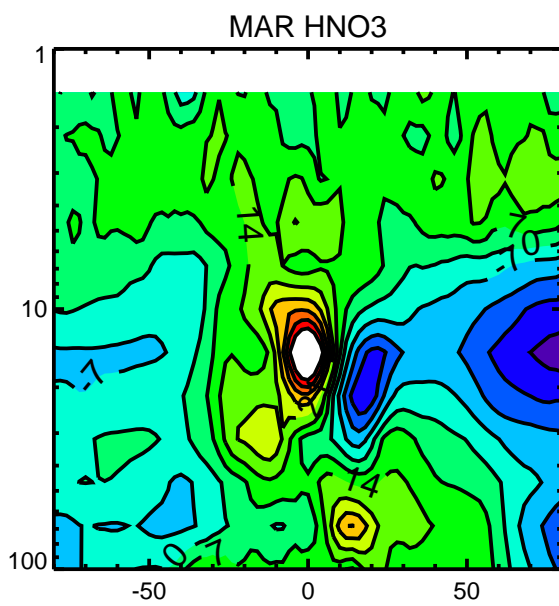
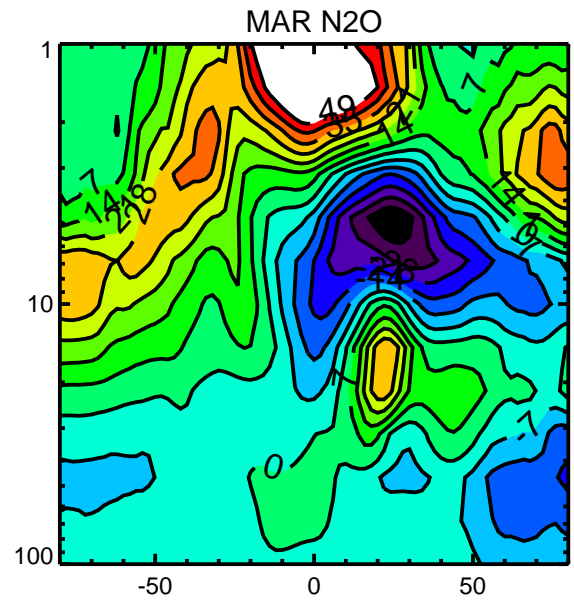
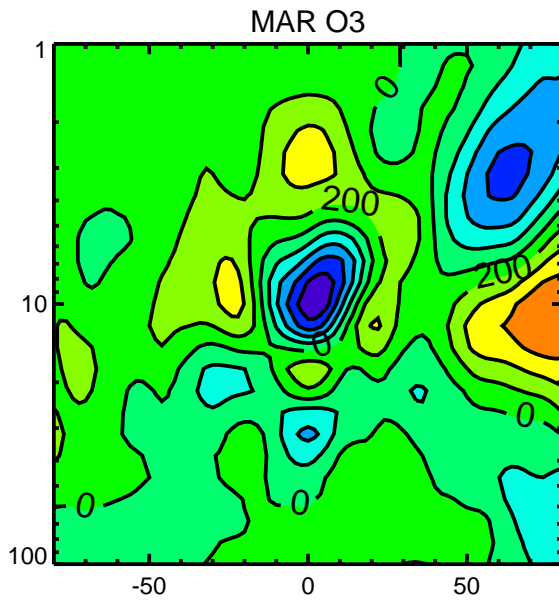
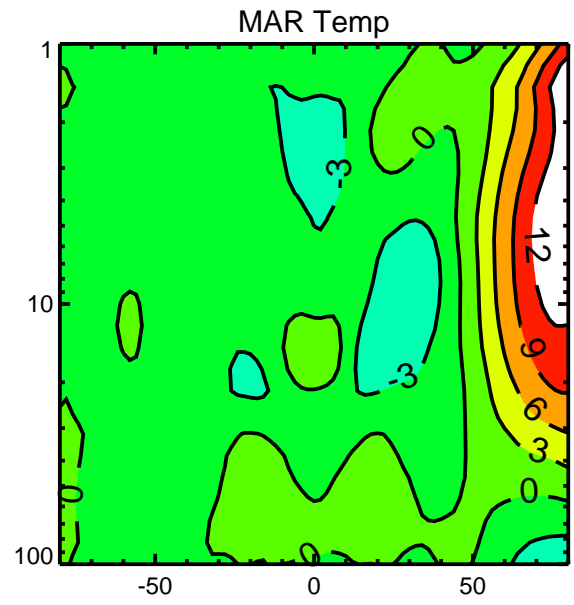
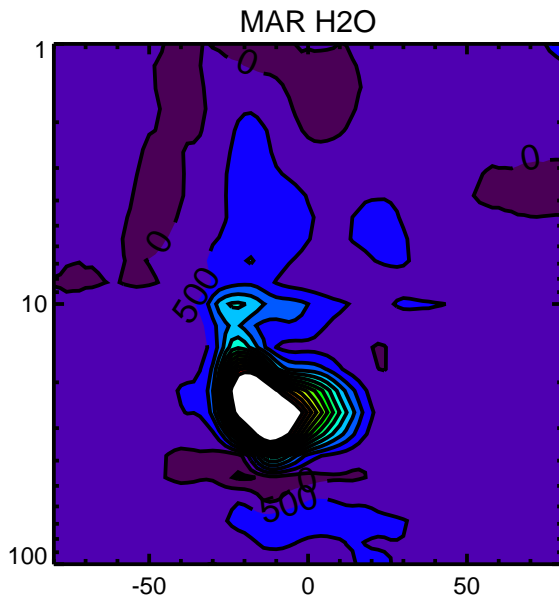
## FEB HNO3



## FEB HCl

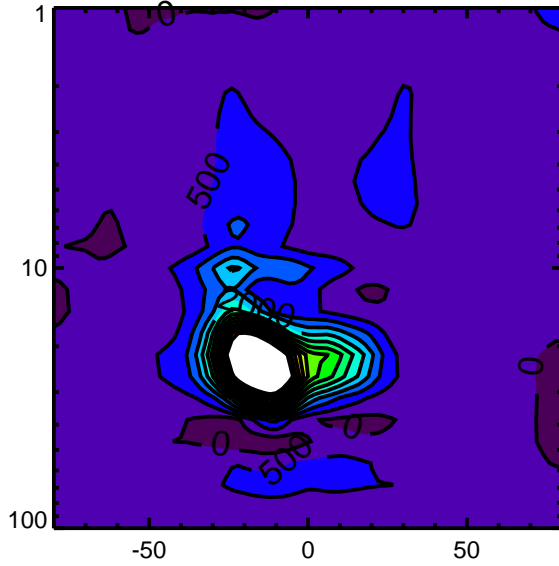


# MLS 2022 Monthly ZM Anomalies (N2O, HNO3, and HCl are %)

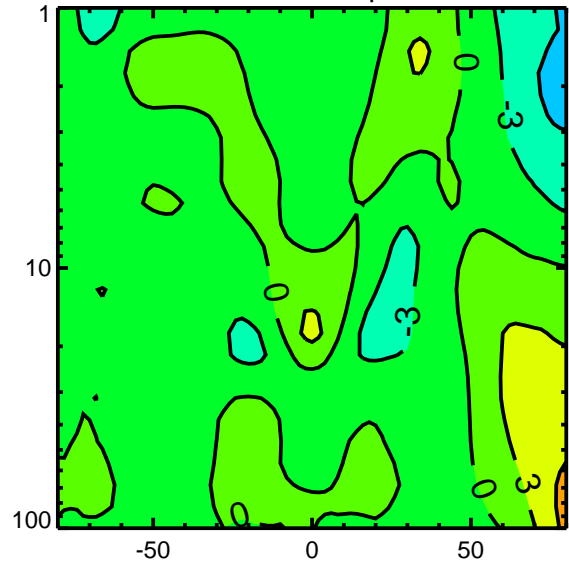


# MLS 2022 Monthly ZM Anomalies (N2O, HNO3, and HCl are %)

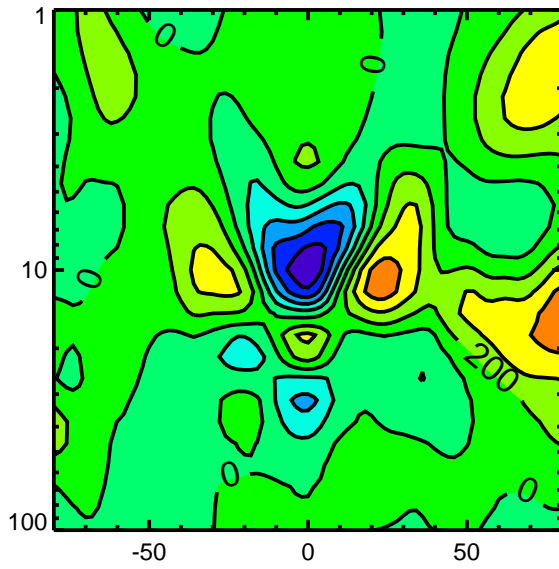
APR H2O



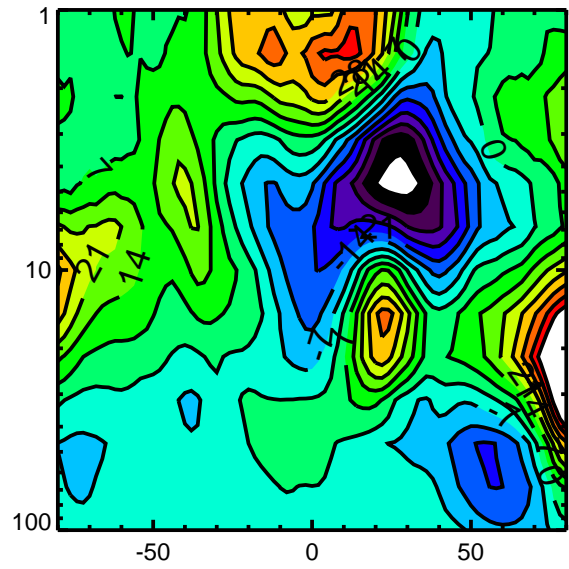
APR Temp



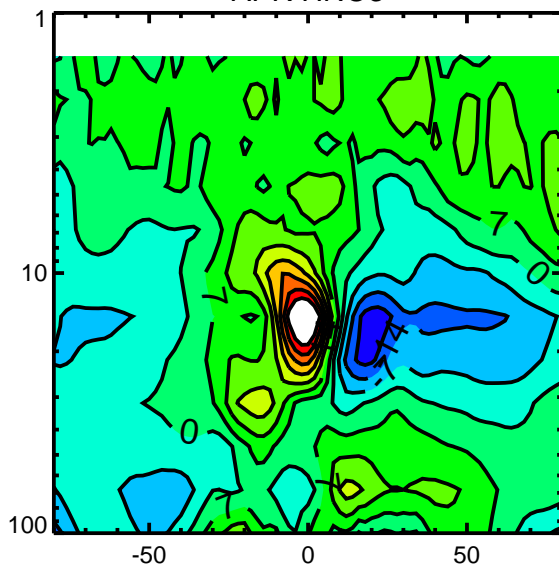
APR O3



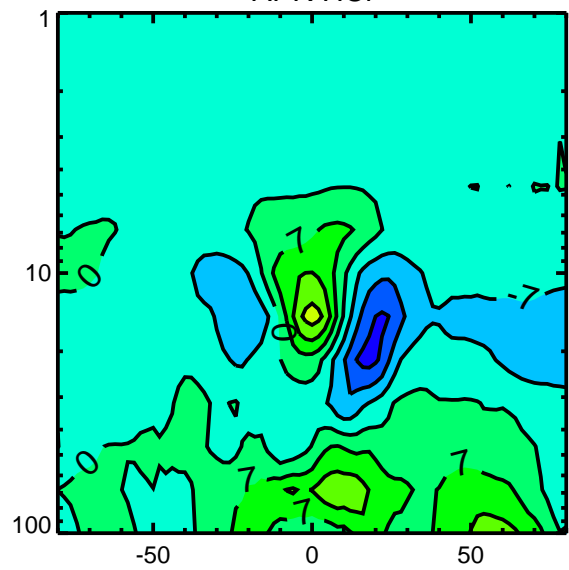
APR N2O



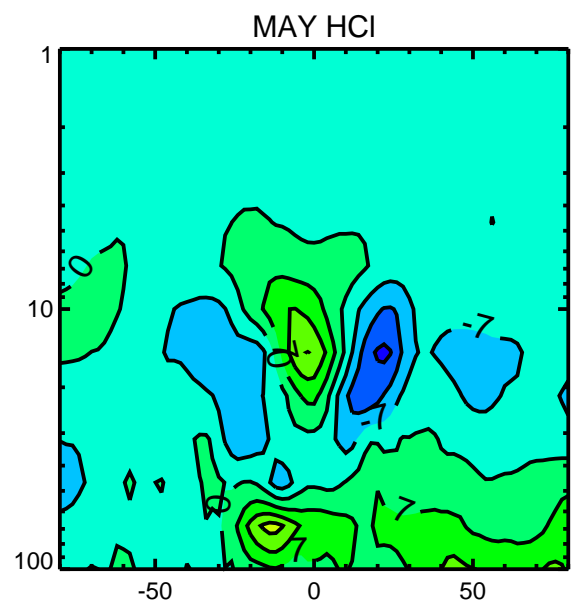
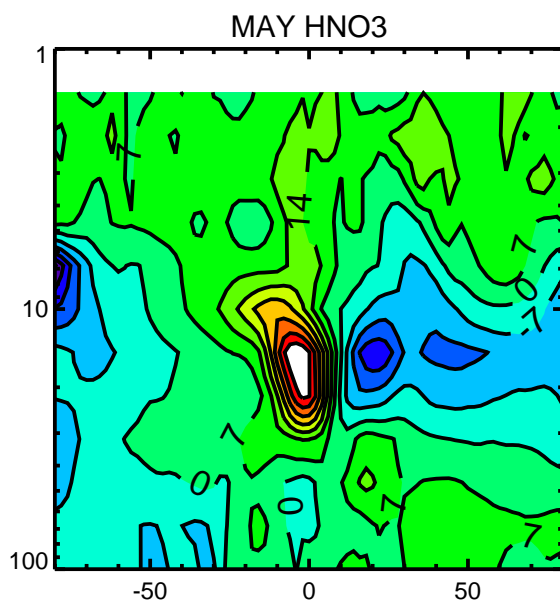
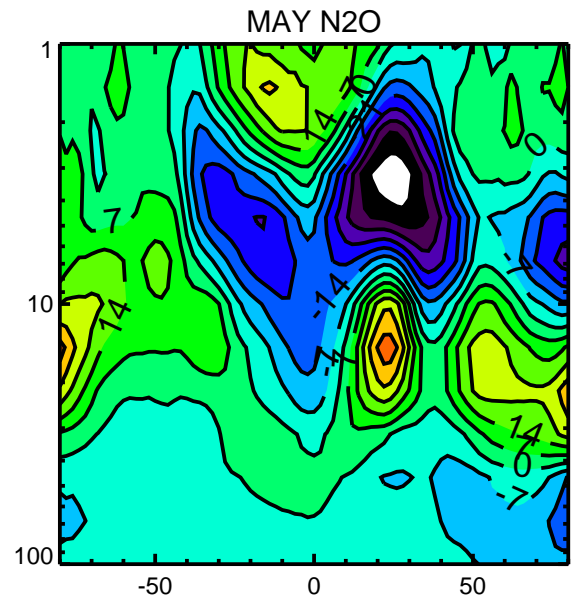
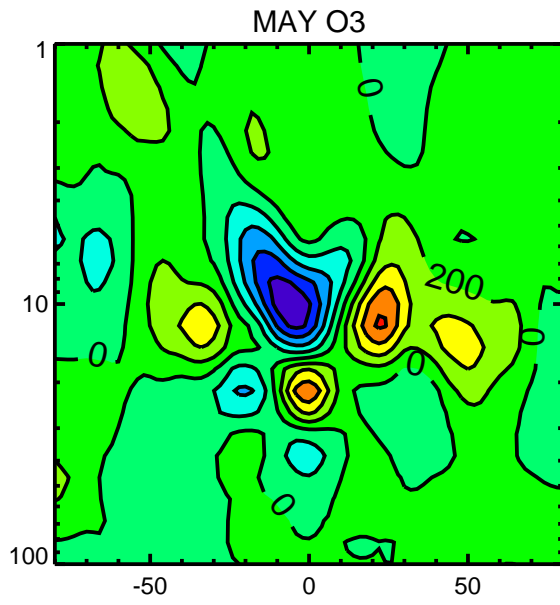
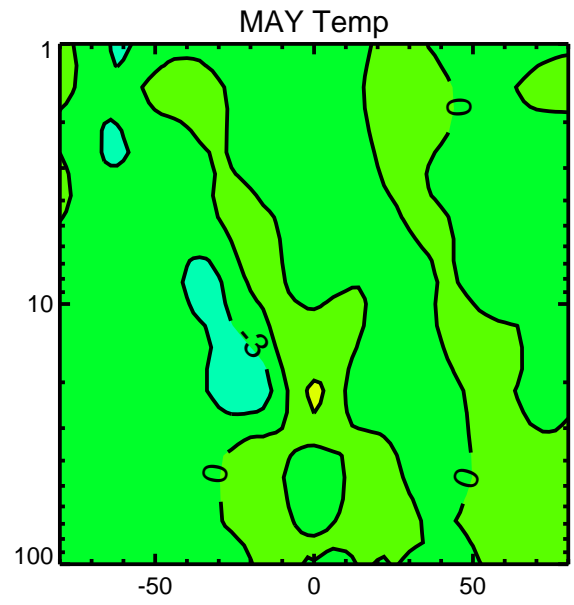
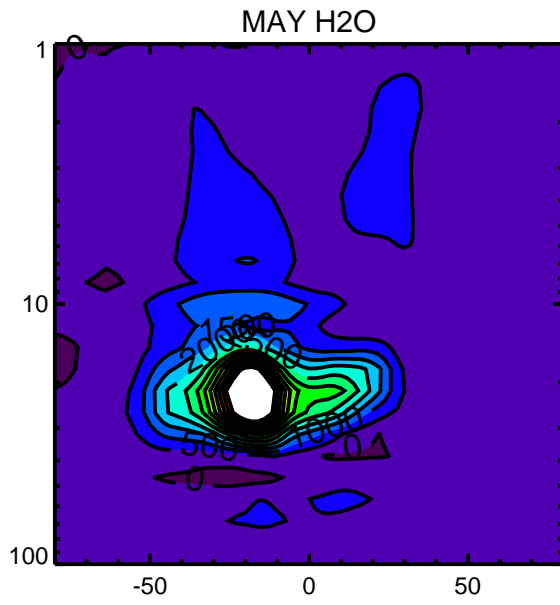
APR HNO3



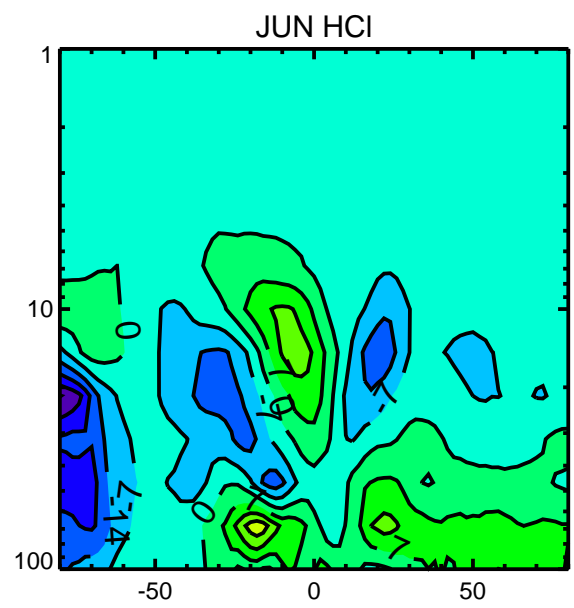
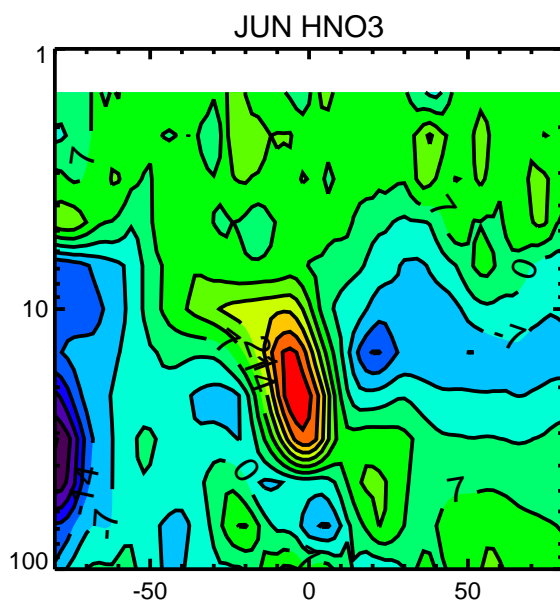
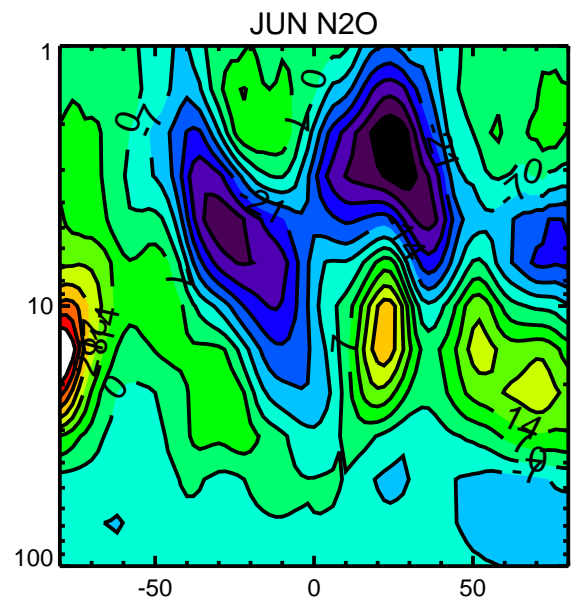
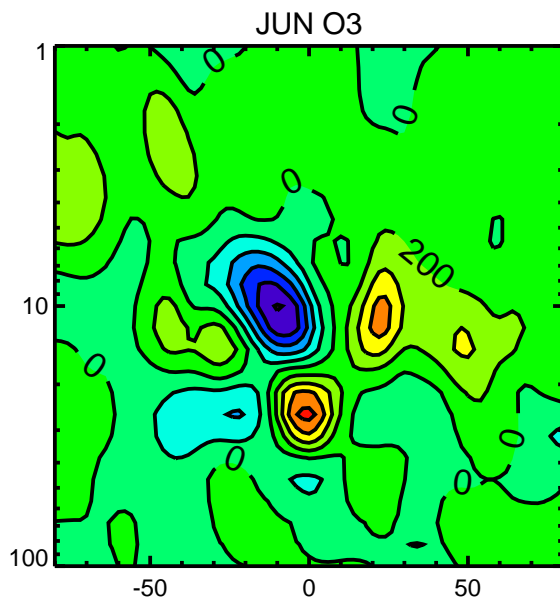
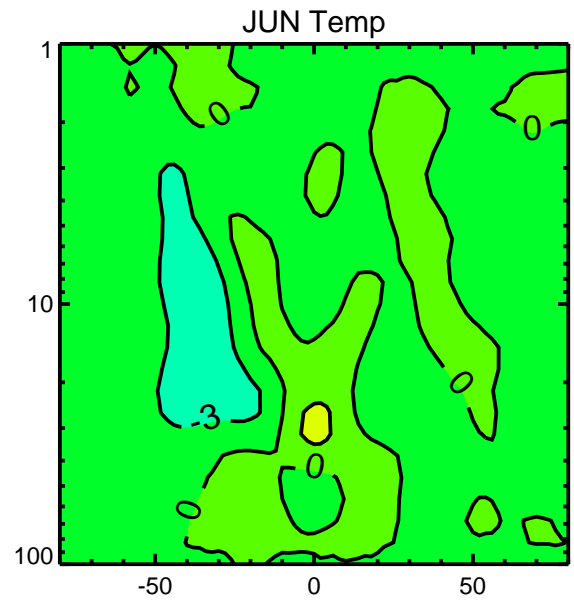
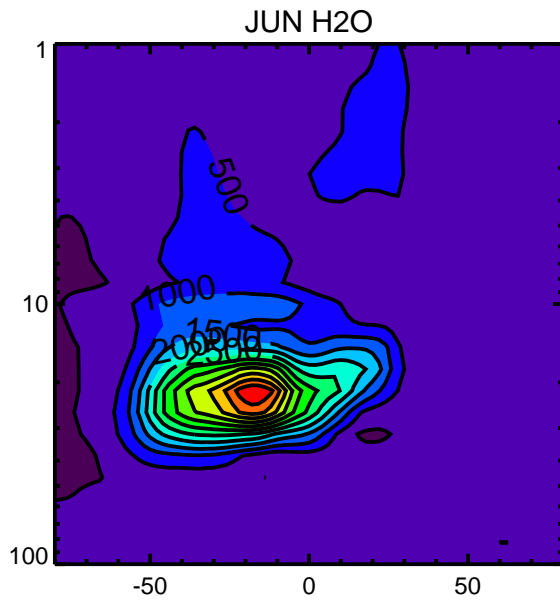
APR HCl



# MLS 2022 Monthly ZM Anomalies (N2O, HNO3, and HCl are %)

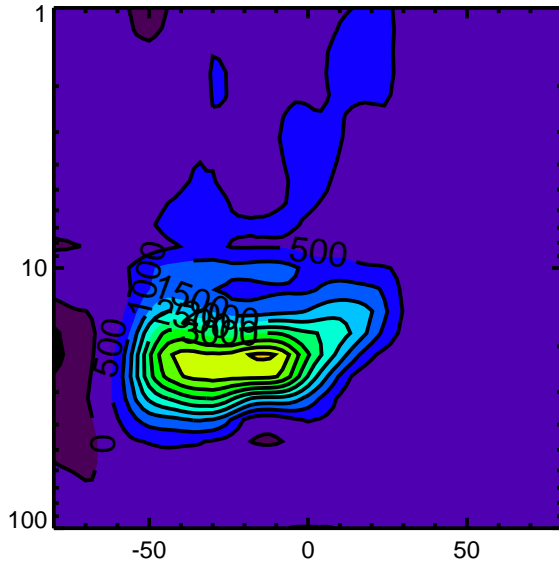


# MLS 2022 Monthly ZM Anomalies (N2O, HNO3, and HCl are %)

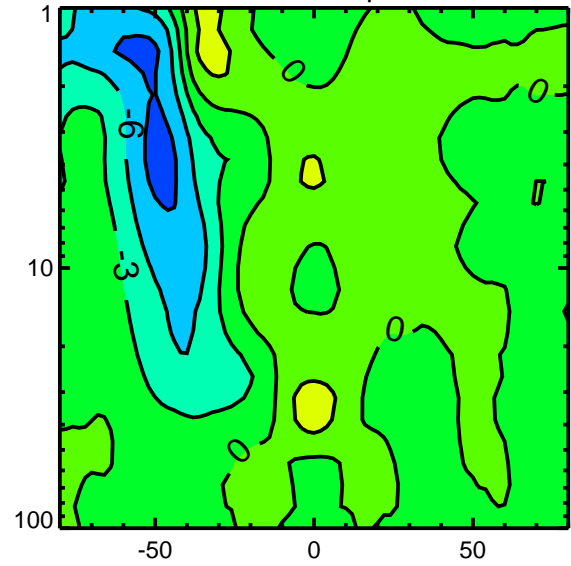


# MLS 2022 Monthly ZM Anomalies (N<sub>2</sub>O, HNO<sub>3</sub>, and HCl are %)

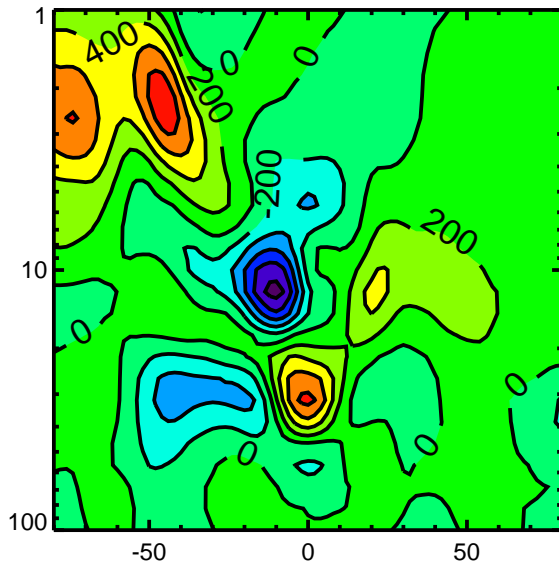
## JUL H<sub>2</sub>O



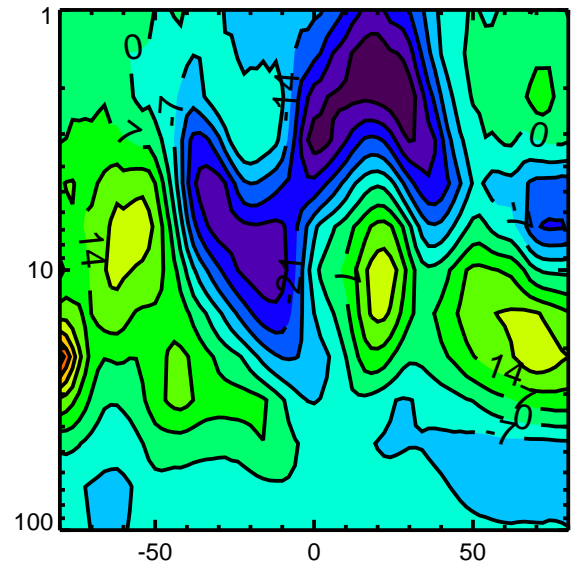
## JUL Temp



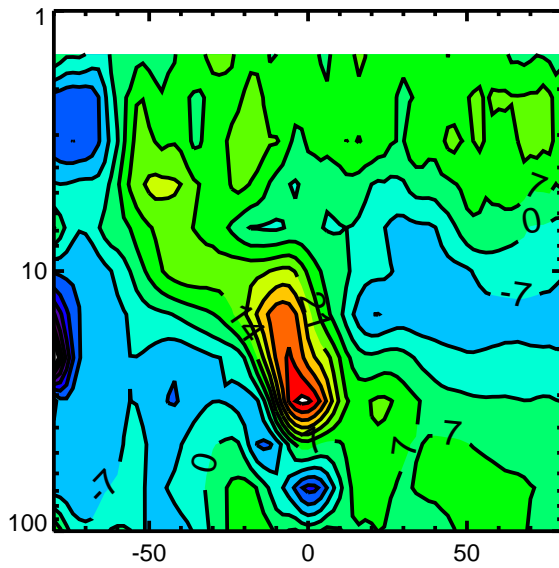
## JUL O<sub>3</sub>



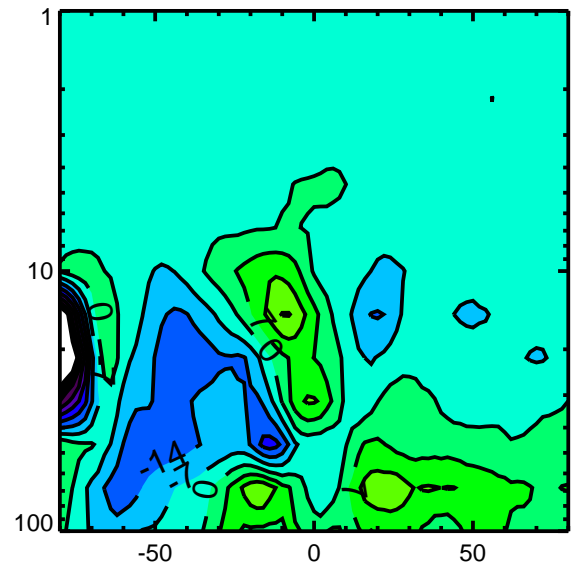
## JUL N<sub>2</sub>O



## JUL HNO<sub>3</sub>

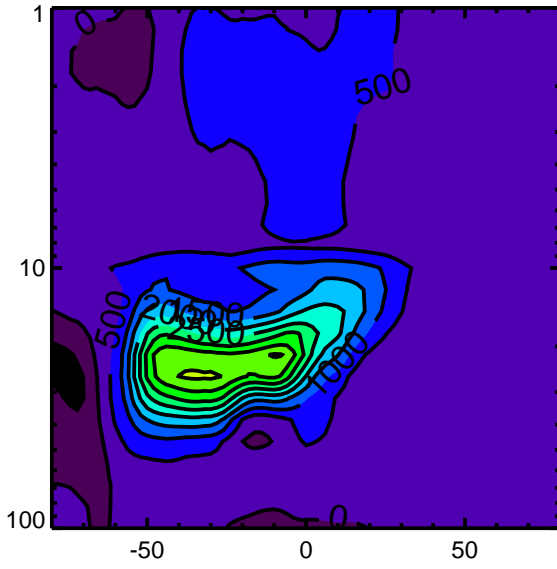


## JUL HCl

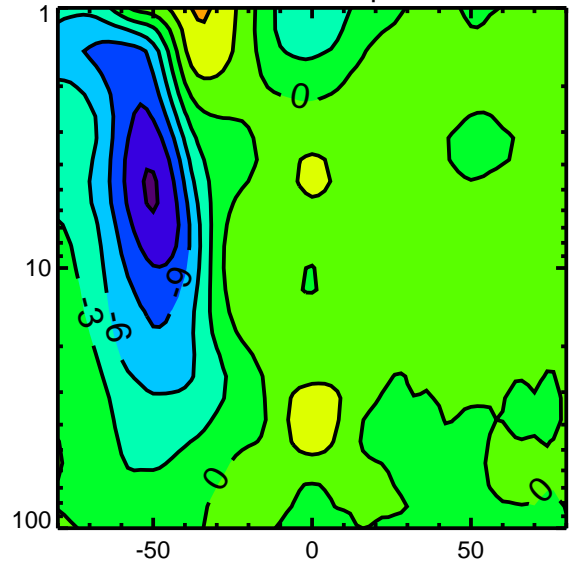


# MLS 2022 Monthly ZM Anomalies (N2O, HNO3, and HCl are %)

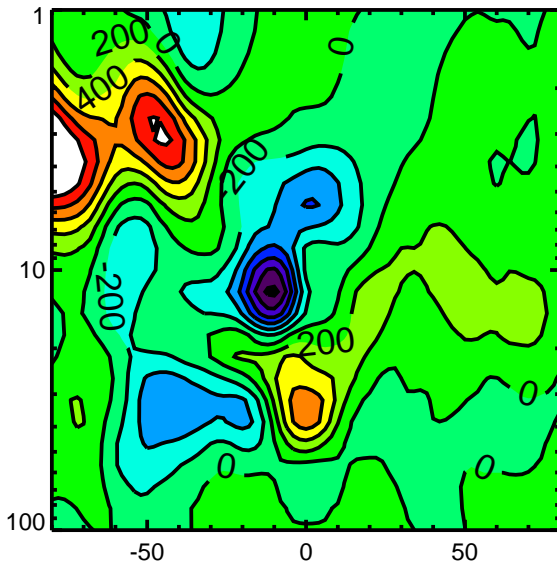
## AUG H2O



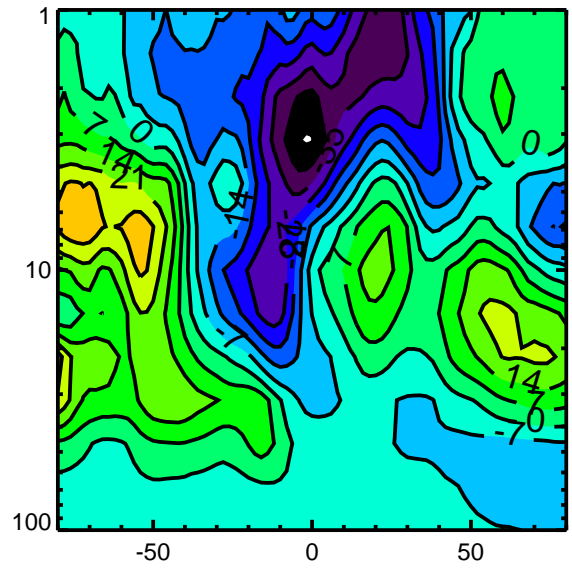
## AUG Temp



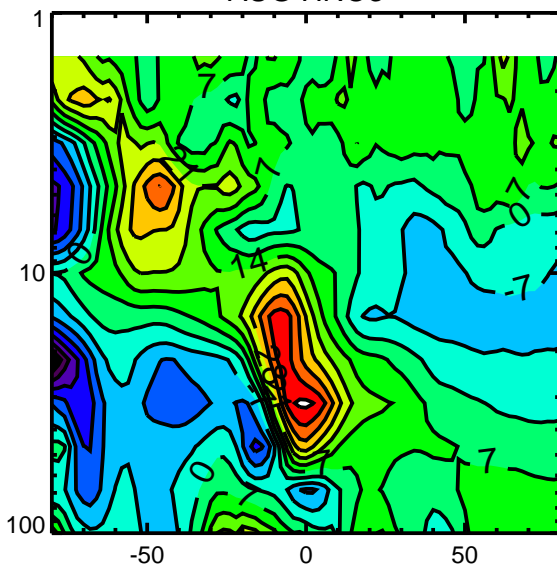
## AUG O3



## AUG N2O



## AUG HNO3



## AUG HCl

