

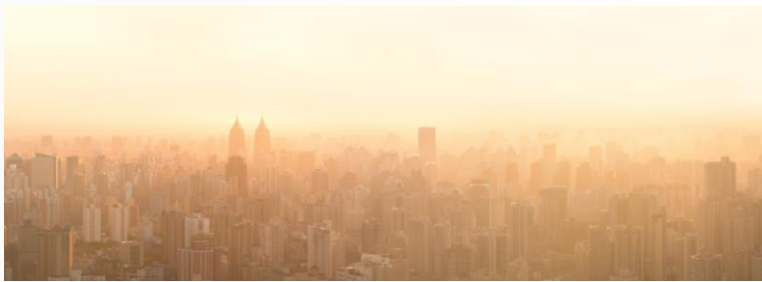


LEADING THE CLEAN AIR MOVEMENT

GLOBAL AIR POLLUTION CRISIS

Air pollution is the **MOST PRESSING** environmental health issue today.

7 Million Premature Deaths are linked to air pollution annually as the #1 environmental cause. (WHO)

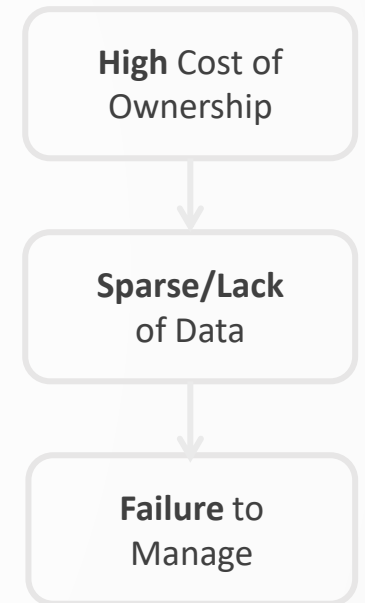
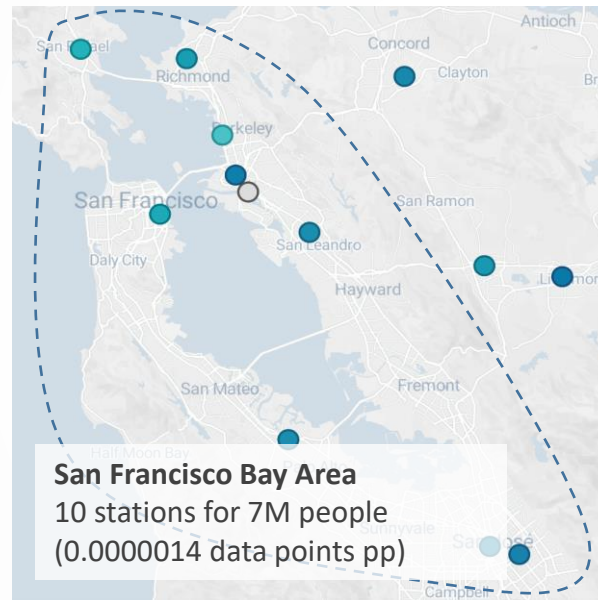


Air pollution is a **trillion dollar** problem.

Failure to manage air pollution costs governments and industries **\$5 Trillion USD** annually. (World Bank/IHME)

WHAT'S THE PROBLEM?

Lack of data results in unclear mitigation ROI and air pollution management failures.



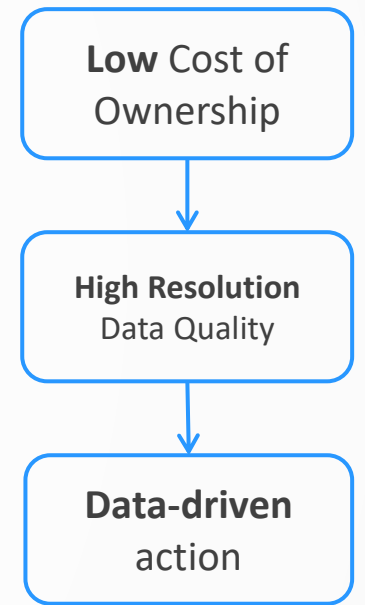
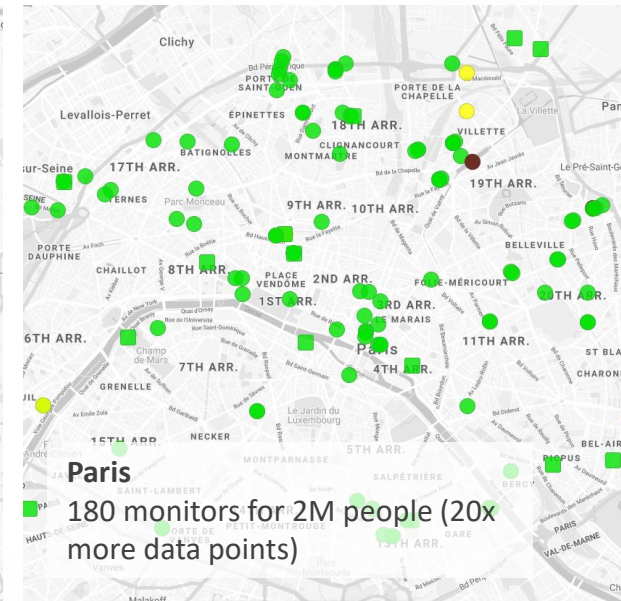
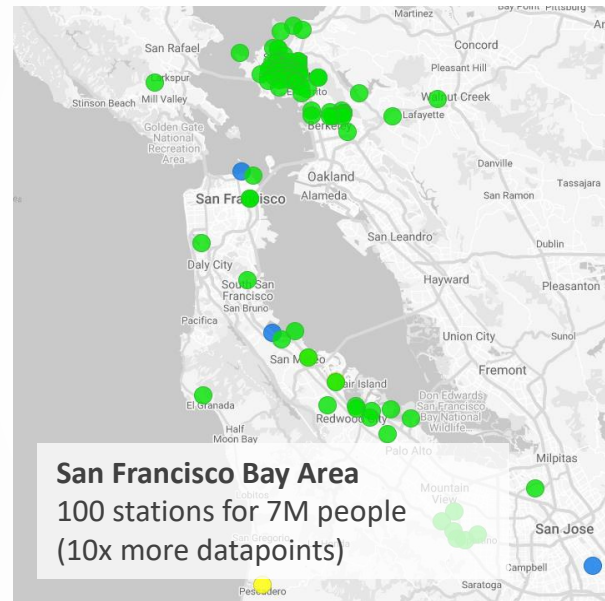
Traditional Monitoring Technology

"If you can't measure it, you can't manage it, and you can't fix it."

- Former Mayor of NYC

WHAT'S THE SOLUTION?

Clarity enables data-driven air quality management.



Clarity Air Monitoring

"If you CAN measure it, you CAN manage it, and you CAN fix it."

-Clarity Movement

SENSING-AS-A-SERVICE

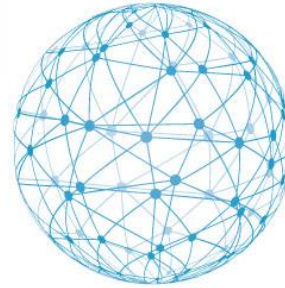
Clarity's "Sensing-as-a-Service" is the most scalable air monitoring solution on the market.



01

CLARITY NODE

- PM_{2.5}, PM₁₀, NO₂, tVOC, temperature, humidity
- Easy self-guided deployment (**under 5 mins**)



02

CLARITY CLOUD

- Integrated cellular communication
- Secure cloud storage & access
- Intelligent data accuracy correction



03

CLARITY INSIGHTS

- Pollution hotspot analysis
- Policy evaluation & planning
- Better prediction models

01 CLARITY NODE NETWORK

Clarity Node-S



Measures PM2.5, NO2, tVOC, PM1, PM10

PM_{2.5} accuracy: R² > 0.8

NO₂ accuracy: R² > 0.7

Rated IPX3 Weather/UV Resistant

Solar Panel + Battery for self-powering capability

FCC + CE Certified

Cellular connection including global SIM & data costs

SmartCity, OpenMap, and API data access

Clarity Node



Measures PM2.5, NO2, tVOC, PM1, PM10

PM_{2.5} accuracy: R² > 0.8

NO₂ accuracy: R² > 0.7

Rated IPX3 Weather/UV Resistant

External power supply for low sunlight

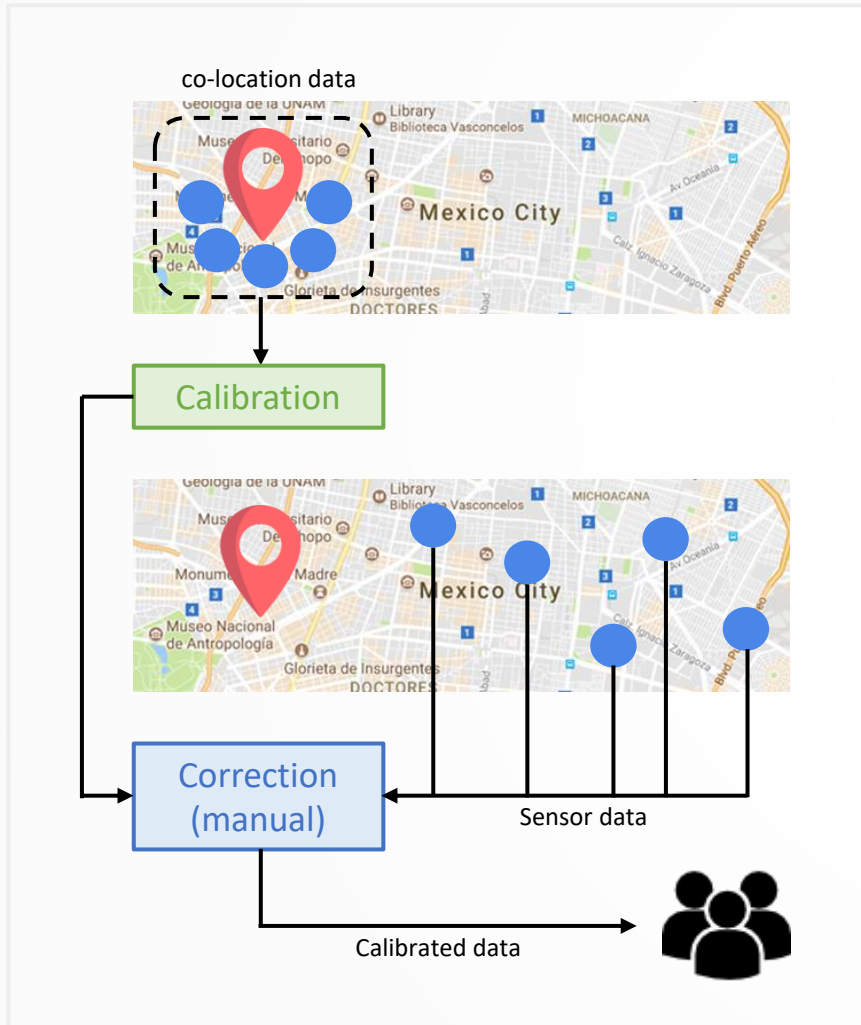
FCC + CE Certified

Cellular connection including global SIM & data costs

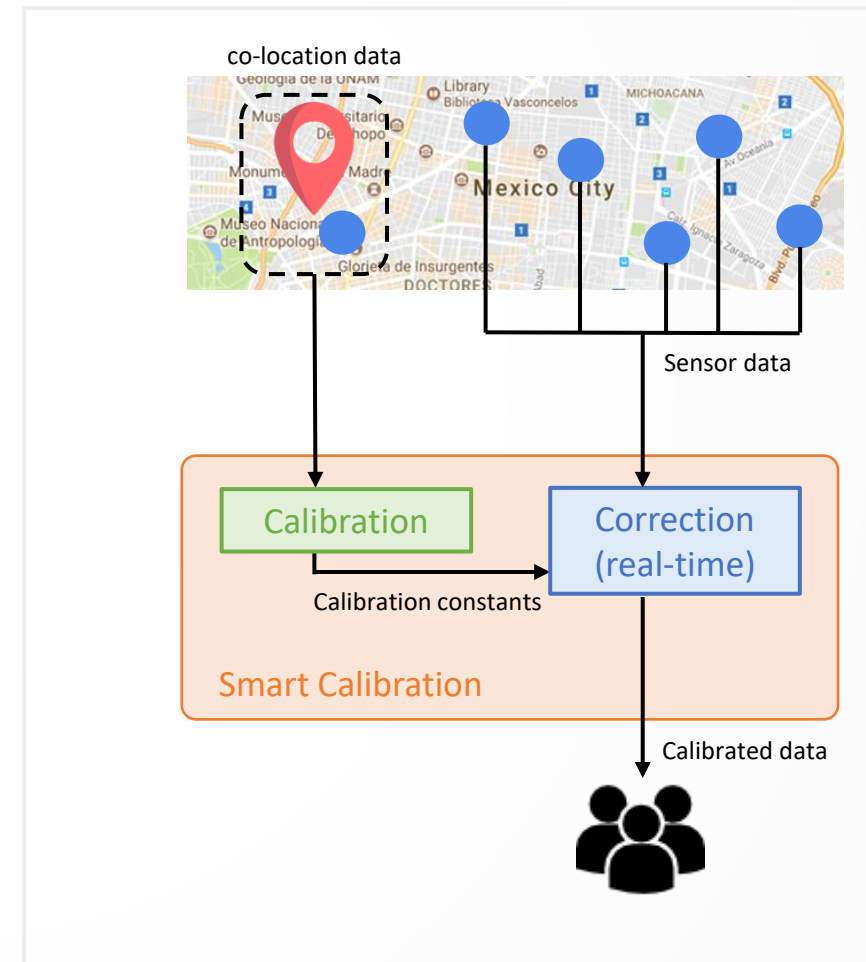
SmartCity, OpenMap, and API data access

02 CLARITY CLOUD

Traditional Calibration



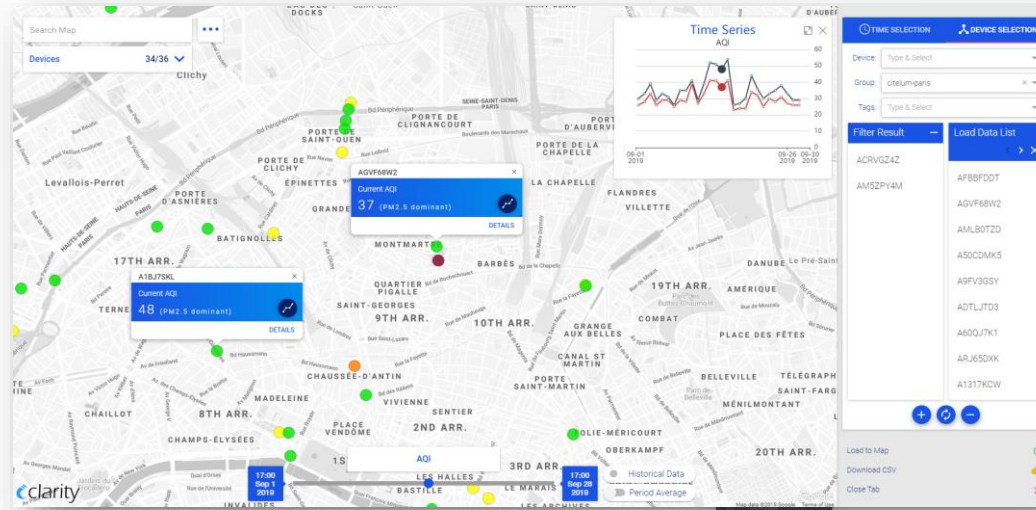
Clarity Smart Calibration™



03 CLARITY INSIGHTS

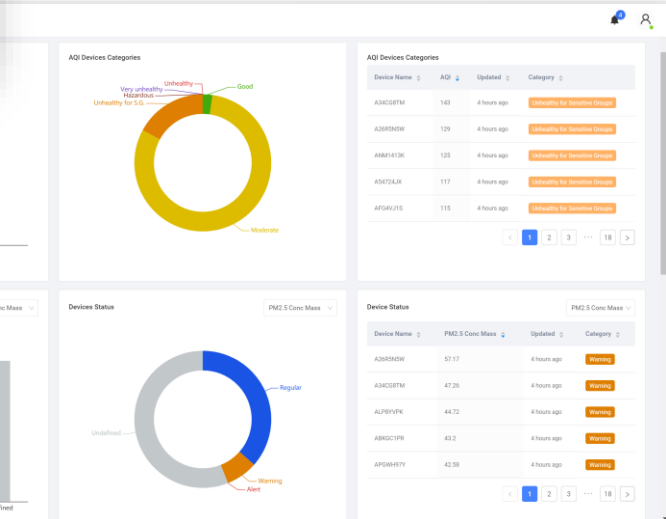
SmartCity WebApp

- **User:** AQ scientist
- **Main function:** data search and download, preliminary data analysis



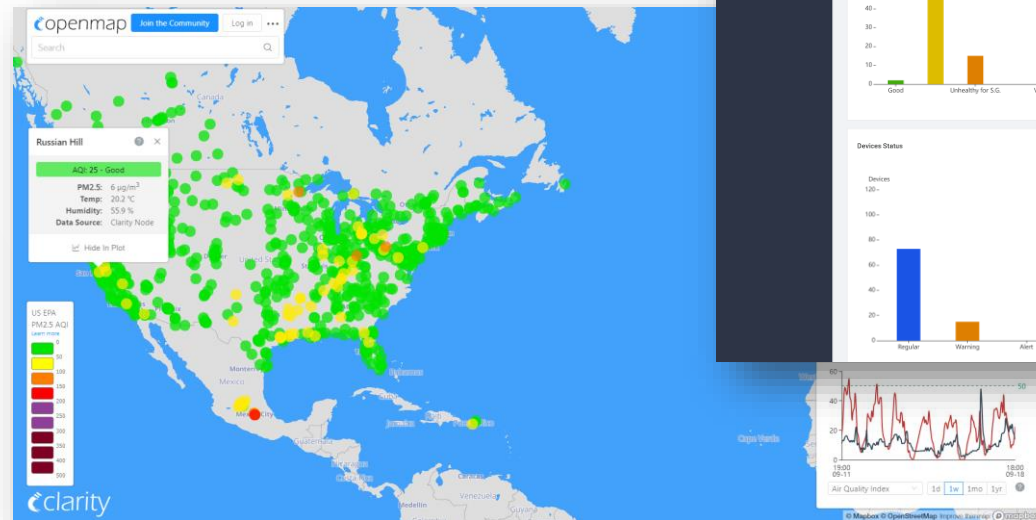
Clarity Dashboard (beta)

- **User:** Government & Industry
- **Main function:** network overview and insight creation



Clarity OpenMap

- **User:** Citizen
- **Main function:** allow institutional customers to share data with the public on a common platform



1500+ CLARITY NODES IN 70+ CITIES IN 30+ COUNTRIES*



MAIRIE DE PARIS  **Bloomberg Philanthropies**

Exposure Study + Modeling

200 Clarity Nodes in Paris

- Save Millions of Euros avoiding ineffective policies
- Protect millions of children at their school



 **HEALTHY AIR COALITION**

 **ECCA**
Global Climate Change Adaptation

Awareness Generation

40 Nodes in Bengaluru

- Monitor air quality at doctors and pediatricians' offices
- Raise patients' awareness of the risks of high pollution exposures



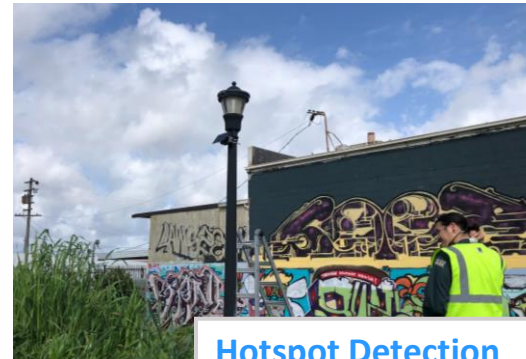
 **EDF**
ENVIRONMENTAL DEFENSE FUND

 **HOUSTON HEALTH DEPARTMENT**

Emergency Response

20 Clarity Nodes in Houston

- Installed in <48 hours in response to petrochemical fire
- Continue to monitor emissions from refineries



 **RAMBOLL**

 **CALIFORNIA AIR RESOURCES BOARD**

 **GROUNDWORK Richmond**

Hotspot Detection

50 Nodes in Richmond

- Identify unknown pollution sources
- Quantify emissions from refineries



 **THE WORLD BANK**

Impact Analysis

30 Clarity Nodes in Kolkata

- Measure ROI of switching from diesel to electric buses
- Monitor exposure of citizens at bus stops

PARTNERS & CUSTOMER HIGHLIGHTS

Network Management

VALIDATED BY



TRUSTED BY





THANK YOU! LEARN MORE AT [CLARITY.IO](https://clarity.io)

