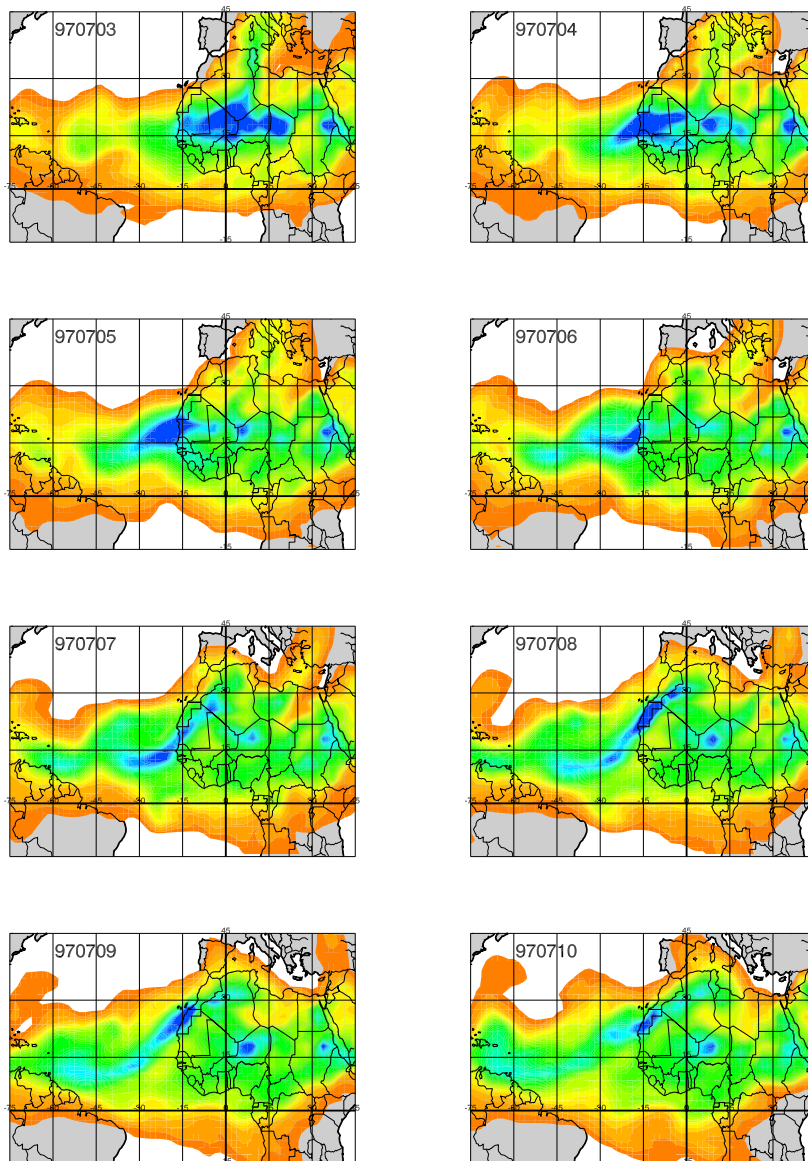


NOWET: Computed Daily Average Dust Optical Depth



630 nm AOD, July 3-10, 1997

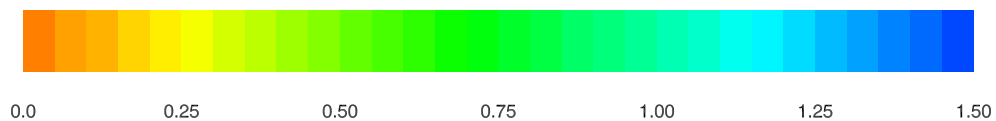


Figure 24. Modeled optical depths for simulation with no wet deposition.

NOWET: Latitude Slice of Modeled Aerosol Mass at 18.1 N, 1800 UTC

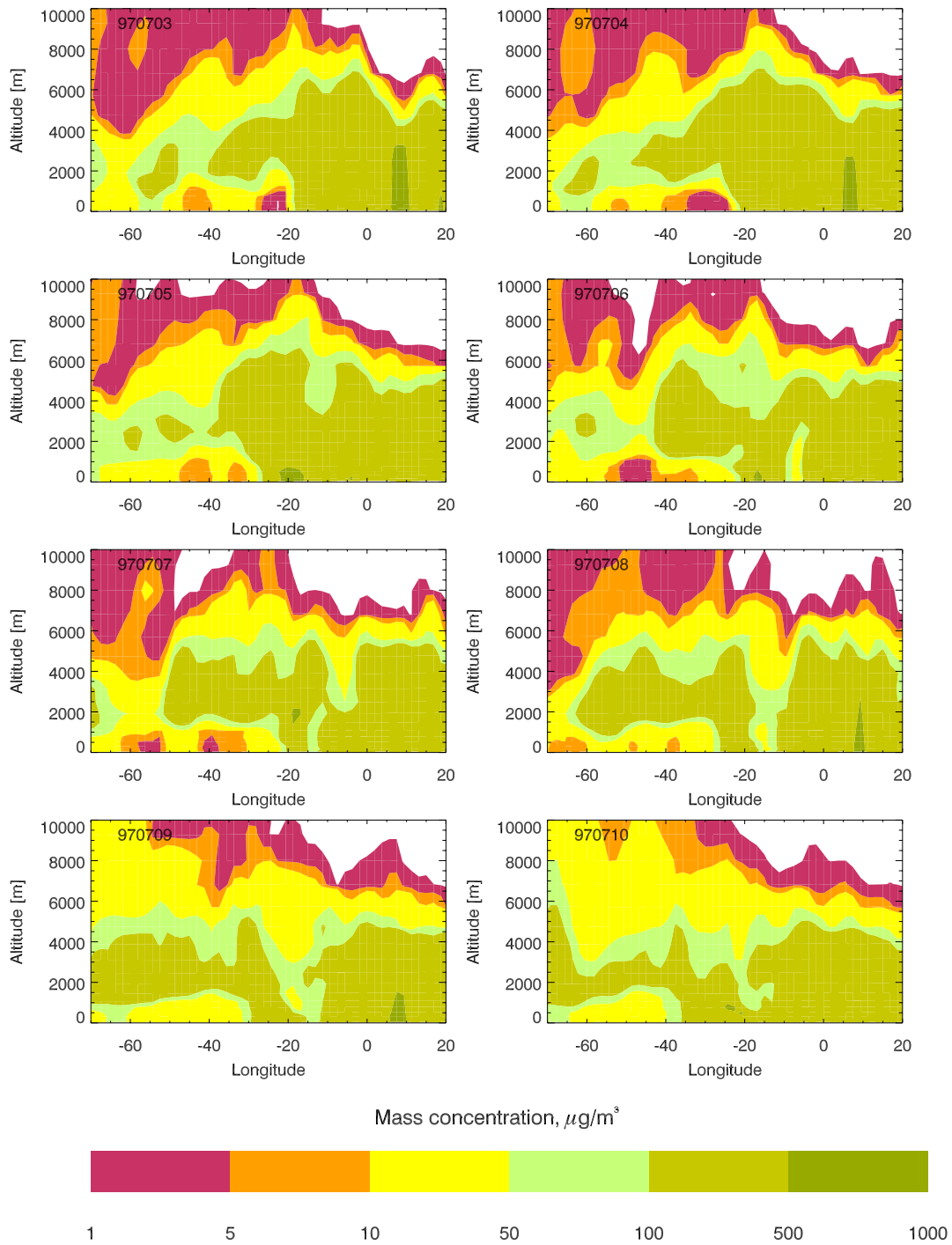


Figure 25. Modeled mass concentrations on the meridional slice at 18.1 N for the simulation with no wet deposition.

Alt Source: Total mass lifted, June 18 - July 18, 1997

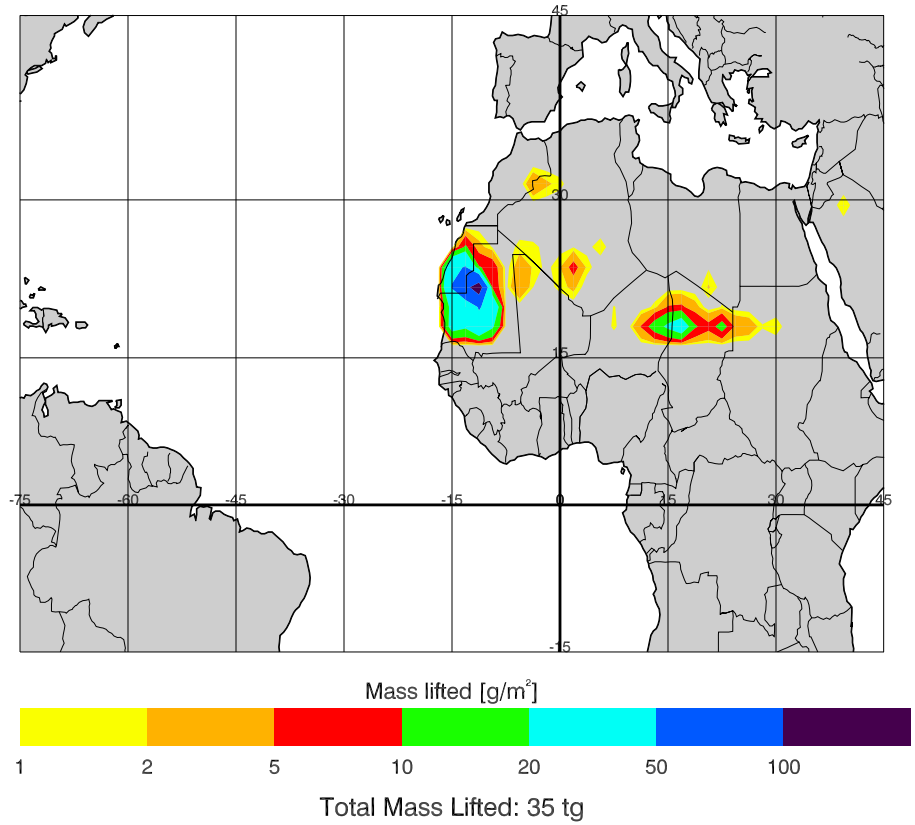


Figure 26a.

Alt Source: Cycle of Dust Mobilization, ACE II Simulation

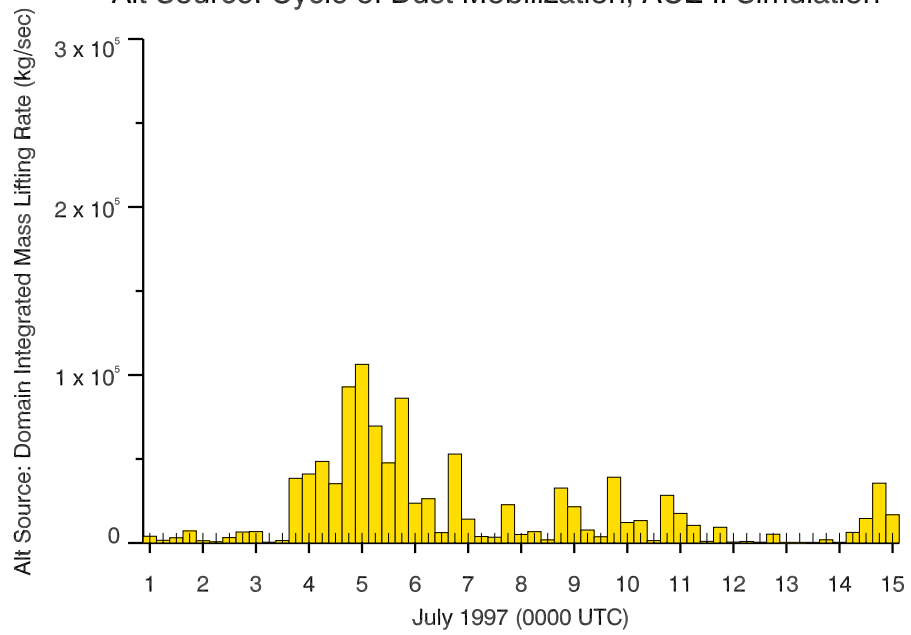


Figure 26b.

Alt Source: Predicted Dust Fluxes, 1800 UTC

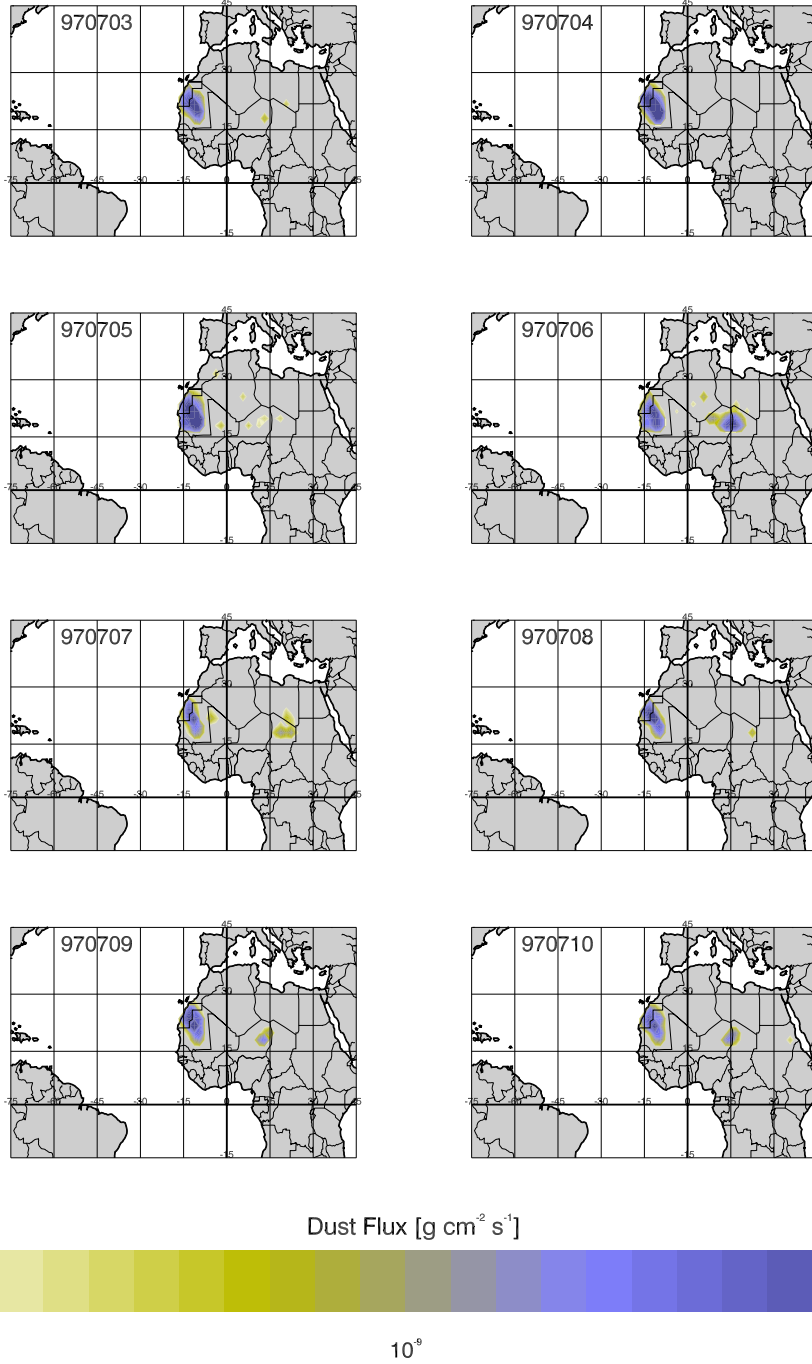


Figure 26c.

Figure 26c. As in Figure 14, but for the *Martcorena et al.* source scheme.

Alt Source: Computed Daily Average Dust Optical Depth

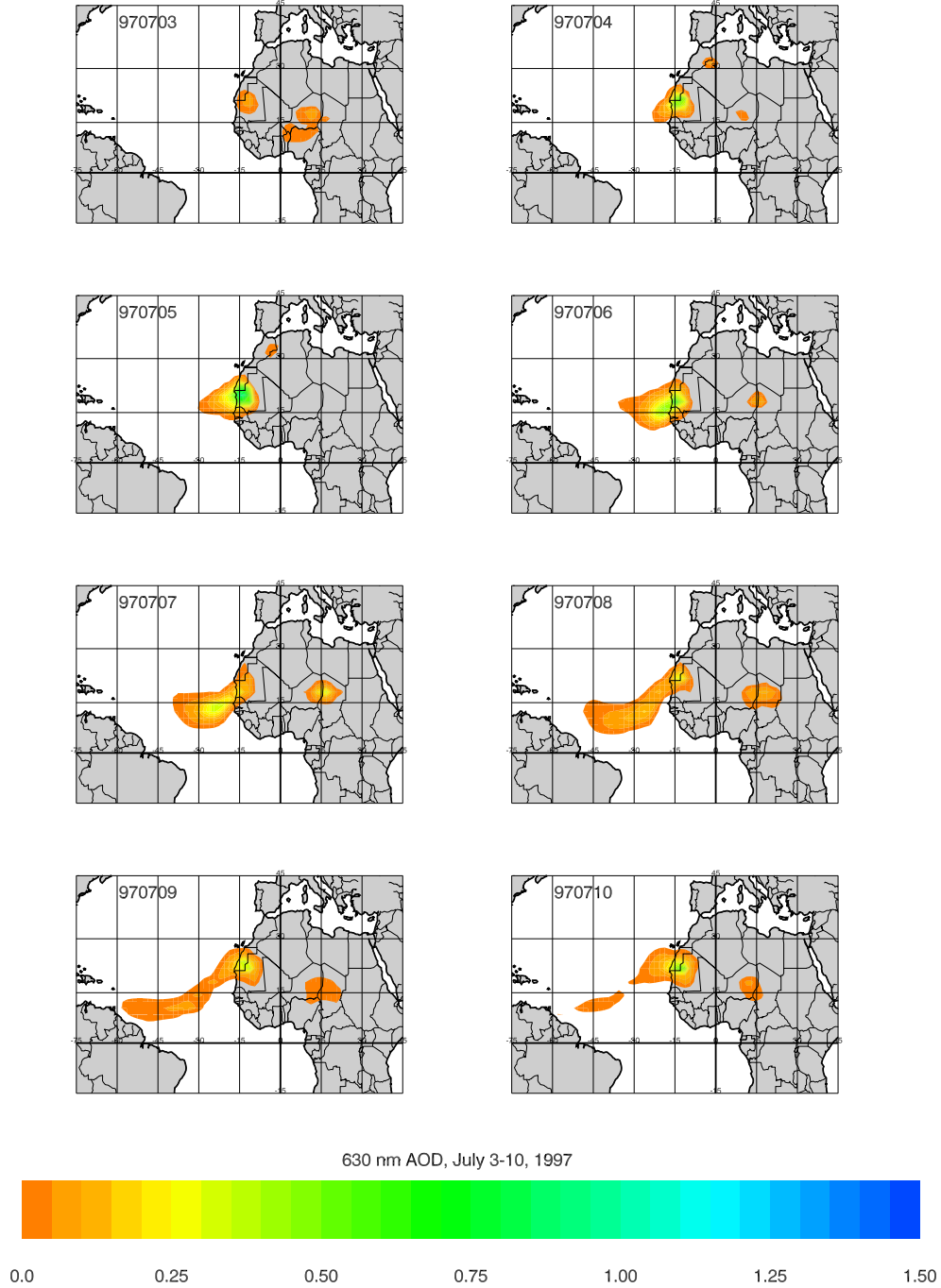


Figure 27. Modeled 630 nm optical depths for the *Marticorena et al.* source scheme.

Alt Source: Comparison of AERONET and Modeled Optical Depths

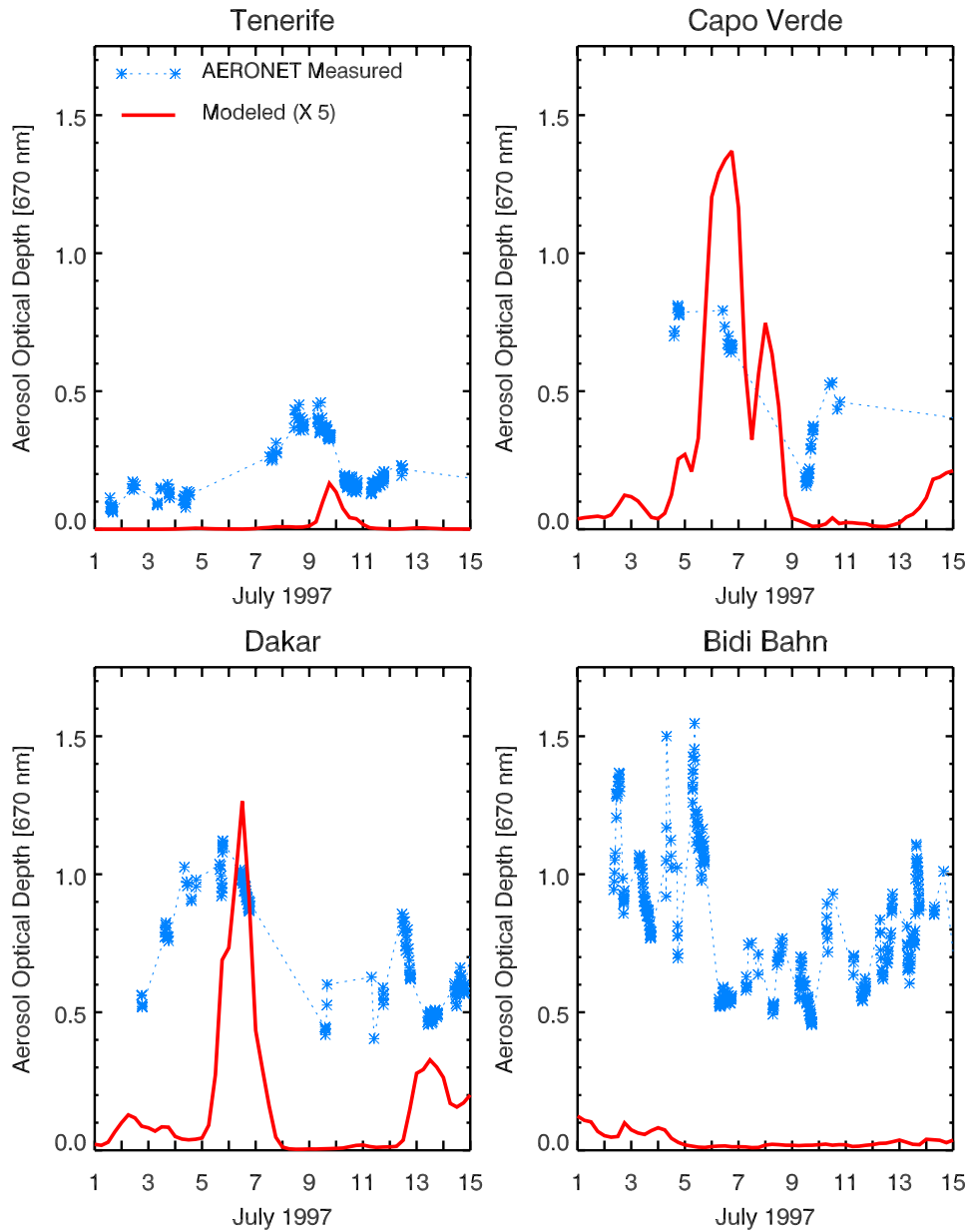


Figure 28. Comparison of modeled to AERONET retrieved optical depths for the *Marticorena et al.* source scheme. Note the modeled optical depths have been multiplied by 5.